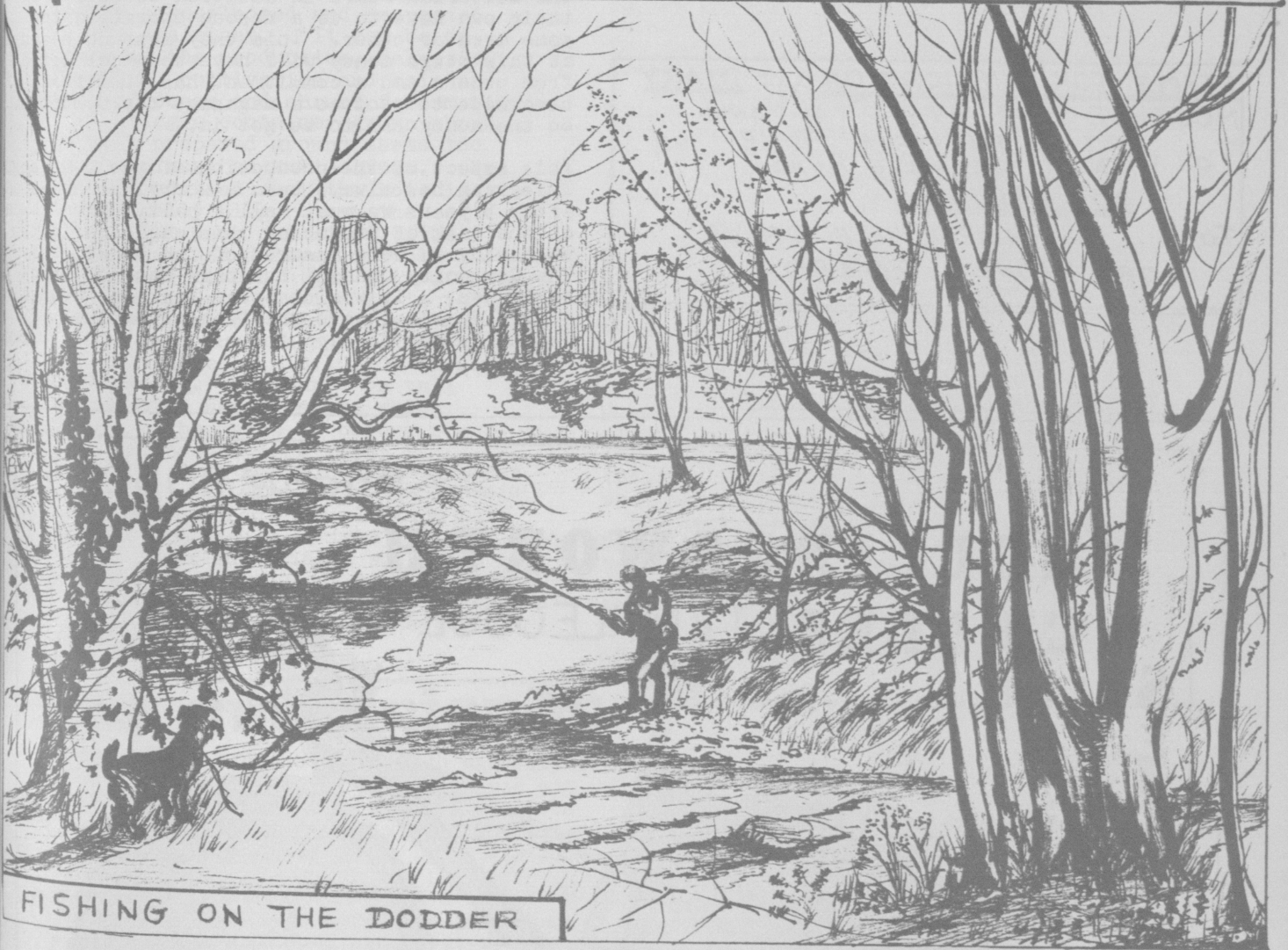


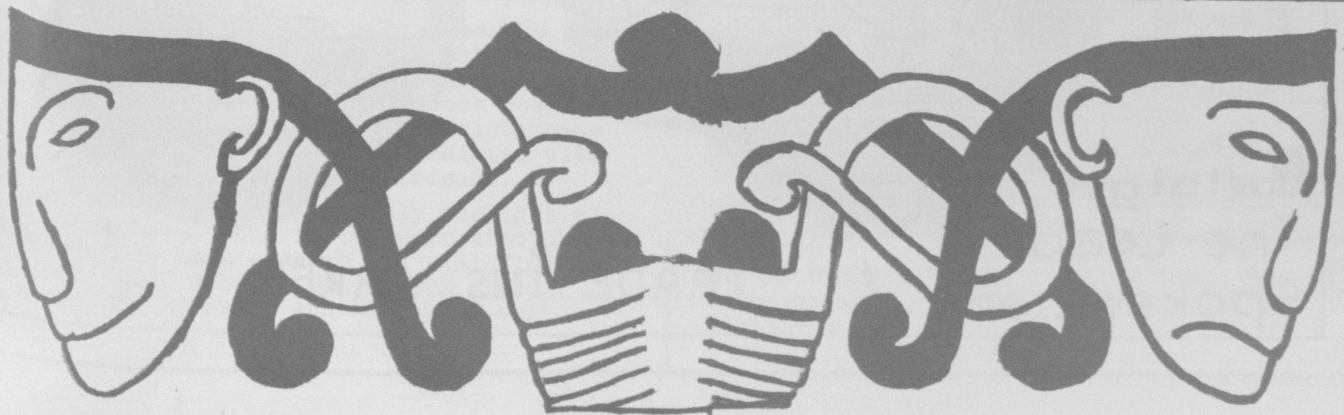
empleogue elegraph

april 1983

30p



FISHING ON THE DODDER



Diary

- Wed. 6th Ladies Club - St.Pius X School Hall
8 p.m.
- Thurs.7th Meeting of 3rd Order of Our Lady of
Mount Carmel - Terenure College 7.45
- Tues.12th St.Joseph's Young Priests' Society
- Fri. 15th Exhibition of Dolls-Presentation
Sat.-16th Secondary School, Terenure 10a.m.-
8p.m. - 50p.
- Mon. 18th GAYAZA GIRLS CHOIR -St.Michael's
Church, Dun Laoghaire 8p.m. £2
- Wed. 20th Horticultural Society - Our Lady's
School - 8p.m.
- Sat.23rd A Festival of Fashion - St.Mary's
Rugby Club (for Our Lady's School)
8p.m. £3 students £1.50
- Mon.25th Solos and Friends - St.Mary's
Room -St.Pius X Church 8.15p.m.

EDITORIAL

The Editorial Board have decided to cease production of the Templeogue Telegraph at the end of this season, i.e. the June issue will be the last.

The financial problems of which we wrote in our February issue have receded mainly due to receipt of late subscriptions, a determination to keep strictly to 16 pages per issue and the forsaking of colour which in itself saves £50 per issue.

The main reason for ceasing publication is that the few on the Editorial Board cannot be expected to produce the magazine as well as collect subscriptions and distribute each month. We have of course loyal distributors who have been supporting us without fail down the years. But each year members of the Editorial Board in addition to delivering their own have to do a rescue operation in some area or other. This they must do because at this stage money will have been collected from others and a commitment has therefore been made to produce a magazine for 8 months. So the money has to be got in.

This aspect of the production of the Templeogue Telegraph has always been a worrying burden and after 5 years we must call a halt. When taking on the task of producing this magazine in the beginning we were assured of the backing of the Community Council but this has not been sustained. It would appear that the Council itself does not have the backing of the Community and perhaps therein lies the problem.

ITEMS FOR PUBLICATION AND DIARY

MUST BE SENT BY 15th of MONTH

To: 37 TEMPLEVILLE DRIVE OR
90 TEMPLEVILLE ROAD.

ADVERTISING

To: 141 TEMPLEVILLE DRIVE
OR PHONE: 904509

Phone 905094

HOLLINGSWORTH CYCLES TEMPLEOGUE

SALES
SERVICE



Raleigh
The Leading
Spokesmen

TRADE-INS TAKEN

horticultural society

At the March meeting on Wednesday 16th, the Chairman, Mr. Tom Donaghy welcomed our guest speaker Mr. Dermot O'Neill and announced to the members and visitors, that we have a television celebrity here this evening, Dermot will be appearing in a programme soon. His subject now is Trees and Shrubs and judging by his successful lecture on Roses in February, we can see why we have a good attendance this evening.

Mr. O'Neill introduced his talk by reminding us that the good husbandry of trees and shrubs is as important as any aspect of gardening. This subject of arboriculture is becoming more widely acknowledged and respected in its own right. It can be defined as the production, selection, planting, cultivation and maintenance of trees and shrubs for amenity.

Planting a container-grown shrub in well prepared ground seems too easy - almost an anti-climax. Mr. O'Neill advised that the hole is dug slightly bigger than the container, 18" deep and lined with moist peat and a layer of well rotted cow manure, then slit off the plastic cover while it is in the position for planting and during the growing season, add a chemical fertiliser. 10.10.20. is also recommended. Standards or tall shrubs will need a stake which should be hammered in before planting, use proper tree ties.

A bare root shrub or tree presents more of a challenge, like the Mahonia and Rhododendron. The planting hole must be big enough to take the full span of the roots and friable soil must be worked in and each root must be firmed so that it is fully in contact with the soil and watered before and after planting.

The worst pest of tree and shrubs is the average gardener. The trouble starts at the selection stage, when he makes the wrong choice. Always Choose the shrub or tree for the size it will be in ten years time. Think of where you are going to plant. Bring a book when buying, do a little research or get advice.

Pruning: Evergreen (Rhododendron) not often, tidying up, removing dead wood; deciduous (Forsythia - Lynwood best variety with large flowers) prune after flowering. Summer (Philadelphus) prune in Spring. Winter flowering, do not need a lot of pruning in Spring. The Ceanothus Arboreus Trewithen blue may be seen smothered in flowers at Walkers, Fernhill Nurseries. Ribes "King Edward" intense colour 6' high available at Marlfield. The Vitifolium Veronica Tennant 8' high seen at Malahide Castle during the month of May. The Berberis Darwinii best forms Apricot Cream shade or sun.

The enormous glossy green leaves of Fatsia Japonica add an almost tropical touch to a dark corner, also the Euphorbia ideal for flower arranger, has lovely foliage and exotic stem. The artochoke culinary plant could be used as an ornamental plant for its beauty.

Acer Palmatum (Palm) Dissectum (dissect) Atropurpureum (purple). Mr. O'Neill encourages latin names when buying plants or seed it is important to get the right forms and only by using the correct nomenclature can we be sure of doing this.

For the raffle the Treasurer Mr. Charlie Ellison arranged to have a Croton (Joseph's Coat) and Mr. O'Neill kindly presented two plants for the occasion the Fritilloria Impirilus Aurora and Hippiastrum Amarillus (unusual bulb) because he felt very welcome when he visited our Society.

The next meeting on April 20th arranged by Mr. Donaghy so that the members assemble to discuss with Mrs. Mary Higgins R.H.S.I., the preparation involved with our first flower show in July. Mrs. B. Williams will have information for flower arrangers, and you may also obtain details in other categories.

Solos and friends

Seven years ago the Solos Club was formed by a small group of widowed persons whose aim was to encourage others in a similar position to come together for a friendly evenings entertainment.

Since then, their confidence in the need for such a club has been more than justified as proved by its continued popularity.

NEW MEMBERS WELCOME. This year we hope to attract more new members and expand our activities. Present membership is about 45 and an average of 25-35 attend each meeting. The relatively small size of the club means that you can become quickly acquainted with other Solo members and their friends.

MONTHLY MEETINGS. Monthly meetings are held in our new venue in the warm atmosphere of St. Mary's Room - which you will find at the right hand side of St. Pius X Church. Time is 8.15 pm every 4th Monday of each month.

SOCIAL ACTIVITIES. Its friendly and informal.... some evenings it's Bingo or perhaps a demonstration....a mini-auction or a musical get-together with, of course, the usual cup of tea and a nice chat. As in previous years the Committee can arrange other activities as desired by the members, such as Theatre Outings - Dinners - Dances and Tours.

Membership is open to all widowed persons and their friends - (yes, you can bring along your friend). So just come along to our next meeting and introduce yourself, you will be most welcome

Twelve members of the Club went to the Abbey Theatre on Monday 7th March and had a most enjoyable night at "Mary Makebelieve".

WANTED Postage stamps (used) - Green Shields
- Donations for AFRICAN COMPASSIONATE AID.
Thank you. (Fr.) Eddie Brady, W.F.
Cypress Grove House.

PRESENTATION SECONDARY SCHOOL,
TERENURE,
DUBLIN 6.

EXHIBITION OF DOLLS

FRIDAY - SATURDAY
15TH - 16TH APRIL
10AM - 8PM

ENTRANCE 50p

[PROCEEDS TO
SCHOOL BUILDING FUND]

Fortfield Building Services.

FOR ALL

CARPENTRY

PLUMBING

HEATING

ELECTRICAL

WELDING

SHEET METAL WORK

Phone 909125

Phone 909125

ESTABLISHED 1971
Templeogue AND DISTRICT CREDIT UNION LIMITED
OFFICES :

46 FORTFIELD PARK
(NEAR ST. PIUS X SCHOOL)

ORWELL SHOPPING CENTRE
(NEAR ST. JUDE'S CHURCH)

OFFICE HOURS

WEDNESDAY 7.15-8.15P.M.

FRIDAY 7.15-8.30P.M.

ALSO FRIDAY 10.00AM - 12 NOON (ORWELL ONLY)

You will be very welcome at either office
and we will be glad to answer any questions
you may have!

st. pius x parents' association

Our special meeting on drug abuse will be over as you read this, but we expect that parents will have realised that it is never too early to learn about the problem. It is, perhaps, the most serious matter to be discussed at any of our meetings, but most necessary in these days when our children are under more and more outside pressures and influences. There is considerable work, too, attached to running any gathering -- our appreciation to all who helped to make it a success, and, of course, our speaker Ms. Audrey Kilgallon of the Drug Advisory & Treatment Centre, Jervis Street Hospital, without which.....

Opportune, too, to congratulate the children from Bishop Galvin and other schools who did so well in the Feile Bhríde. Our own children were equally impressive, although apparently they represented themselves not the school. Which is a pity, although it has been stressed that the event is a Feis, rather than a Feile which is not competitively orientated. Competition is healthy and no doubt should be considered part of Character development. The same applies to sport and attitudes of children to discipline which is regrettably lacking in the school and manifested itself to us in the activities under our direction. Improvement is called for. A topic, maybe, for further discussion at the half hour available to parents before the committee's monthly meeting in the school. A number of interesting matters arose during a similar half hour before our last meeting. The subject was the lack of canopies in the playground, which we have mentioned before, also organised games, but the committee were left in no doubt that the parents are unaware of the activities of the Boards of Management, and the parent representatives on it.

Which is one reason for these notes -- to keep parents somewhat informed of our activities and discussions with school principals and management. For example, we are still debating photographs --- the annual event by which a photographer comes to the school. Our continual feedback is that there is massive dissatisfaction on this matter. And our letters to the photographer seeking at least a dialogue have not been answered. The committee is considerably puzzled by this issue. However, it would appear that the last photographs have been taken. There is also much debate on music in the school. We want it on the curriculum, though little progress has been made, with tin whistle in one classroom, recorder in another, out of school hours guitar, and a suggestion of piano. Music should be part of the curriculum, we believe. Parents' views on this, and other matters giving them concern, are welcome.

st. pius x acolytes

CONFIRMATION: Recently the boys and girls of St. Pius X school and the girls of Our Lady's School made their Confirmation. It was Saturday 5th. The ceremony went without a hitch, and Bishop Carroll congratulated everyone. Everyone put a lot of effort into it and lent a hand so that the ceremony would run smoothly.

NOVENA: From the 4th to the 12th March there was a Novena to St. Francis Xavier. Fr. Redmond, S.J. kindly preached at the 10 a.m. and 7.30 p.m. Masses. Many people came to these Masses. Fr. Brennan, S.J. who did the Novena for the last 2 years is in hospital with an ulcer, so please offer your prayers for him.

Easter is one of the busiest times of the year for all the altar-servers. There are many major ceremonies, which include Palm Sunday, Holy Thursday (which is the biggest), Good Friday and finally the Vigil on Easter Saturday. Mr. E. Power will have to work very hard to train us for the ceremonies.

CLONGOWES: Every year the Altar Boys are taken on a fun-packed holiday to Clongowes Wood. Because of inflation the price of the holiday has gone up since last year. We will be going from the 7th to the 12th August. The Cake Sale is to raise money for that. This is one of the reasons why we need your support. We would also like to thank the priests for their help. Last year we raised £505 for which we are very grateful. Another factor is selling tickets for which there was many excellent prizes.

FILMS: On Saturday the 19th and Sunday the 20th February we went to see films. They were shown on Mr. E. Power's Video. On Saturday the films were "The Empire Strikes Back" and "Star Trek II". On Sunday "Star Trek II" was replaced by "Zulu". It was a success but unfortunately some could not see it because they had the flu. We are grateful to Mr. Power.

PAUL HEARTY. JOHN GAFFEY.

LETTERS TO THE EDITOR

Dear Sir,

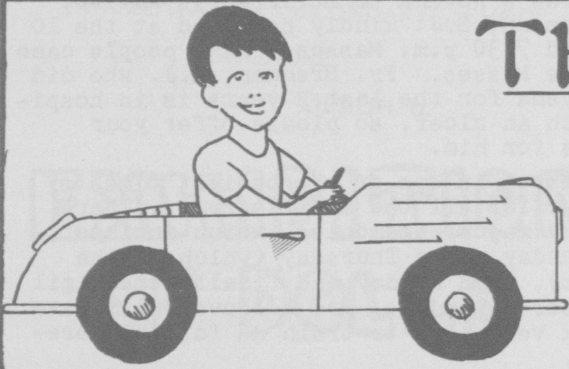
"Facing up to Self Pity" was the title of a very interesting article in the March issue of the Templeogue Telegraph. I read it and re-read it, but found that I could not agree with "R.S.'s" view of a very real problem.

It seems to me that self-pity is a most distressing complaint - more distressing to the sufferers than to the people to whom they "dole out their perpetual diet of woe" - and one that cannot be dismissed as dispassionately as is suggested by the article. Nor can it be cured by telling the unfortunate victims about those who coped with similar problems so much more effectively - although I would think that that might work with the little self-pity which R.S. describes as "forgivable". But if it is being caused by "grievous tribulations", shouldn't we be a little more constructive in our thinking in order to find ways and words to help them towards a more peaceful frame of mind?

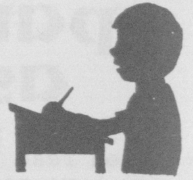
As R.S. so rightly says "Pity is a lovely work which really means compassion, a deeply felt understanding and sharing of another's sorrow". Could we not begin, then, to practise it by trying to understand the self-pitying? By supplying the truly listening ear that hears not only what is being said, but, perhaps more important, what is being left unsaid. Maybe midst the welter of words we might hear a cry for help. Maybe we might be able to exchange the wise old lady's wet shoes for a dry warm pair. With a little help from our friends.

N. FITZPATRICK

Thank you R.S. for a thought-provoking, conscience-prickling article.



THE NURSERY CENTRE



IS THE PLACE FOR YOUR INFANT
OR TODDLER FROM 7.45 TO 6
P.M. MONDAY TO FRIDAY, ALL
MEALS CATERED FOR.

KINDERGARTEN SCHOOL AVAILABLE
FOR 2½ TO 4 YEARS, SUPERVISED
BY TRAINED TEACHER.

Phone 903433 Mrs. Traynor, S.R.N.

36 CYPRESS GROVE RD.

Inter. and Leaving Cert.,

*Revision Course
at*

White Fathers House, Templeogue.

Phone 905816 - 880859

*Man and
VAN*

with TRAILER for light furniture removals - rubbish also
and scrap etc. Window cleaning service also available
reasonable rates -

M. Duggan

Phone 860059

templeogue ladies' club



Our A. G. M. took place on Wednesday, March 2nd. Regretably, for an occasion which should be one of the most important in the Club year, the attendance was small. The President, Treasa Durcan in her address said that she had found the past year very enjoyable and thanked the members for their patience and support. She also paid tribute to her hardworking committee, especially the four outgoing members - Catherine Bent, Angela Brady, Mona O'Dea and Evelyn Sharkey. Treasa said that the Club may sometimes appear a bit impersonal and some people find it hard to get to know their fellow members. The best way to get to know people is to join some of the activities. Throughout the year we have tried to do things at meetings which would involve everyone, and we hope to do the same in the coming year. She thanked all the members who attended meetings and took part in competitions to keep up the high standard for which our Club has been renowned. Four new committee members were elected: Carmel Dunne, Phyll Heron, Eileen O'Connor and Carmel Pidgeon.

On Friday, March 4th, some of our members were among the congregation in Rathfarnham Church of Ireland Parish Church on the occasion of the Womens World Day of Prayer. Our choir joined with members of other choirs for the hymns, and altogether it was a devout and inspiring occasion.

A bus load went to the Fr. Matthew Hall on March 11th to see our Drama Groups entry for the I.F.W.C. Drama

Competition. Having seen the play "Bricks and Clay" we were not at all surprised when the results were announced the following night to hear that our group had swept the board for prizes. Imelda Gogan got the prize for Best Actress and Geraldine O'Rourke for best Supporting Actress. We also won the prize for Best Production and Best Overall Production. Congratulations to Producer Chris Fannin and all the actresses and back stage crew for a fine achievement.

Congratulations also to Eileen O'Connor who has now reached the finals of the Aora Cookery Competition which will take place on the middle of April

The Choir were in Arklow on March 13th to compete in the Arklow Music Festival. They came second in their competition. Well done! It was a very pleasant day out for the Choir and their supporters. After the competition we had a nice meal in the Arklow Bay Hotel and after the meal joined other choirs in the bar for a great sing-song.

Hope to see a good crowd for our April meeting - Wednesday 6th. It is the start of a new year and annual subscriptions are now due, so please help our hard-pressed Treasurer by bringing your sub. along in an envelope with your name, address and telephone number.

TEMPLEOGUE G.A.A.

At the Annual General Meeting held on 2nd December three of the outgoing officers - Jim O'Donoghue, Chairman, John O'Driscoll, Vice-Chairman, and Sean O'Brien, Treasurer - were re-elected. A new Secretary, Gerry Galvin, was elected to replace Sean Maher who wished to take a year's leave from active participation in the Club's affairs. Tributes were paid to Mr. Maher for the immense amount of work he has done since the Club was founded in 1972 and hopes were expressed that next year he would be returning as an officer.

The annual report showed that 1981/82 had been a very busy year. The Regional League ran from September 1981 to March 1982 with only a very short Christmas break. This was immediately followed by the Fortfield Cup which was not completed until June and in July the Father Lee Cup competition was organised as part of the Summer Project. Then after a break in August we were into training for the Regional League in September

In the meantime, six of our players, Conor Ryan, Loughlin Walsh, Frank Walsh, David Redmond, Talle Kelly and Raymond Halpin took part in trials to pick a team to represent Dublin South-East. The first four were selected and played on winning teams against North Wicklow.

The representative competition was organised by our Vice-Chairman John O'Driscoll who is now in his second year as Chairman of the Dublin South-East Regional Board, having been re-elected unopposed at the 1982 Annual Convention.

The Club's two teams in the Regional League are doing exceptionally well. The Under-12 team have lost only two games and they are looking forward to the return match with St. Jude's early in April. If they win they will qualify for a 3-way play-off to decide the winners of the competition. The six boys already mentioned, together with Bobby Brown, Thomas Kerwick, Richard and Anthony O'Donoghue, all of whom are playing their third year with the Club, form the backbone of the team but recent additions, Michael and Thomas Davis from Hazelbrook and Andre Bockeroso from Terenure have added considerable strength.

The Under-10 team are doing even better. Of eleven games they have lost only one and that by a single point. They need to win only one of the remaining matches to win the competition. Grosvenor Court is strongly represented in this team, supplying five very good players - John Finlay, Sean Brown, Damien McDonnell, Kenneth Powell and Rory Ardagh. Brian Galvin and Brian McGrane are our mid-field stars. The defence depends a lot on Willie Connolly but he is ably supported by his brother Fergal, John Dalton, Paul Cahir, and Morgan Donnellan. Eoin Cotter, Garret Gormley, Denis Brennan and Barry Rattigan are showing up well in attack.

Councillor Laing

I quote replies to a number of matters raised by me at recent Council Meetings.

1. Progress on Templeogue Bridge

The tender of John Paul Construction Ltd. of £728,680 has been accepted. Work is expected to start in mid 1983 and continue for 18 months.

2. Telephone Kiosk - Templeogue Village

I have been assured by the Minister, Mr. J. Mitchell, that it is presently under consideration.

"For Two Pins...." Michael Sheehan

The other day I saw something I hadn't seen for a long time. In Grafton Street, an old grey haired lady bent down and picked up a pin from the pavement. It was a small gilt safety pin - probably from a Saint Patrick's day badge - and she said to me as I passed, "I haven't seen a pin like that for years - I'm sure it will come in handy for something" and pinned it to her lapel. In these days when children refuse to pick up any coin less than 5p it was refreshing to see one of the "old school" practising a bit of common sense.

In one of my school text books there was a story - I suppose one could say it was a story with a moral - concerning a man who needed a job very badly. One day he went for an interview and on his way out (remembering, no doubt, what had been drummed into him all his life "WASTE NOT - WANT NOT") he stooped to pick up a pin from the floor and placed it on the shop counter. The story went on to relate how the owner, who had just interviewed him, was so impressed that he called him back and said that anyone so conscientious deserved a job and gave him one forthwith! End of story - Steady income, happy home, loving wife, etc.

But recently an American Business magazine gave an up-to-date version of the story as follows:-

At the outset the shop owner was so impressed with our friend during the interview that he gave him the job. On his way out the elated new employee stooped and picked up a pin which he placed on the same counter. But this time the owner was furious! He changed his mind about giving him the job with the comment that "we have no place in this firm for people who waste time picking up pins - that's a job for the cleaner".

That's the end of my comments. Little did the old lady in Grafton Street know that she was going to figure in a Templeogue Telegraph article - and one of mine at that!

3. New Lights Fortfield Shops

E.S.B. are presently doing this work. Light over Murphy's Shop is being connected. Remaining two will be provided as soon as possible.

4. Survey of Defective Lights in Templeogue Area

This to be carried out shortly. Manager agrees he is unhappy about present service and said he was considering contracting out some of the work to speed up repairs.

5. Open Spaces at Wainsfort Shops

The Parks Department have undertaken to replace stakes and make improvements.

6. Templeville Road Roundabout

Painting and clean-up works will be done but my request for trees and shrubbery has been turned down as no money is available. This, I feel, is an area where our local residents associations could become involved and so enhance our prospects of succeeding in the Tidy Districts Competition.

BRANLEY LAING

TO LET Luxury Mobile Home - Brittas Bay - Fridge, Shower, Central Heating - Phone 902146

templeville and fortfield residents' association

Sunday, 1st May, 1983 is NATIONAL WALK DAY. As you know, walking is one of the most important recreations available to people of all ages and abilities. The forthcoming Walk Day will give an opportunity to many to walk in parks, along Canals and in the mountains. We would like to point out that the purpose of National Walk Day is to promote the cause of walking only and no sponsorship of any organisation is involved. So we urge you to get on your walking shoes on the 1st May and step out lively.



Southern Cross Route Study Group: It has been asked of us the up-to-date news on the Southern Cross Route. The following is the position:-

1. Traffic volumes on the national ring route running from the Bray Road at Fosters Avenue to the N5 (Galway Road) and N7 (Naas Road) via Taney Road, Churchtown Road, Braemor Road, Templeville Road, Greentrees Road and St. Peter's Road, continue to grow.
2. A number of new unofficial ring routes have developed in recent times. Principal among these new ring routes are:
 - (a) Leopardstown Road - Sandyford Industrial Estate - Kilmacud Road Upper - Barton Road East - Beaumont Avenue - Meadow Park - Nutgrove Avenue - Butterfield Avenue, joining the main national ring route adjacent to Rathfarnham Shopping Centre.
 - (b) Leopardstown Road - Sandyford Industrial Estate - Sandyford Road via Wedgewood joining the route outlined in 2(a) above at Dundrum.
3. The County Manager is proposing to councillors that they amend the recently published draft development plan to include a link between Sandyford Road at Parkvale and the eastern end of Ballinteer Avenue. This link would result in the provision of a new ring route from the Bray Road via Leopardstown Road - Sandyford Industrial Estate - Sandyford Road - Ballinteer Avenue - Grange Road - Taylors Lane - Ballyboden Road - Ballyroan Road - Firhouse Road, crossing the river Dodder to join Tallaght Road via Templeogue Bridge. From Tallaght Road the route joins the new Tallaght By-Pass and Belgard Road dual carriageways to join the Naas Road at Newlands Cross.

A subsidiary link would be provided between the route at Ballinteer Avenue and route 2(a) above at Nutgrove Avenue via a new link road which would utilise Broadford Road.

In the normal course of events there would be no major objection to the various routes outlined above being provided to accommodate local traffic. However, in the absence of an outer ring road these new routes will be called upon to take all of the orbital traffic crossing South County Dublin, i.e. the traffic plying between the Bray-Road Naas Road and Galway Road and between the recently developed industrial sites at Sandyford, Ballymount and Tallaght.

This group maintains that the only real solution to the traffic problem in South Co. Dublin is to immediately construct the Southern Cross outer ring motorway. If you want to avoid residential roads in your area becoming juggernaut trails please ensure that you are represented at the next meeting of the Southern Cross Route Study Group which is scheduled to take place in the meeting room adjoining the Beavers Lounge Bar in Ballinteer, at 8 p.m. on Tuesday, March 15 1983.

The Annual General Meeting took place in Terenure College on Monday, 21st March 1983.

The Chairman's Address and the Hon. Secretary's Report were very comprehensive.

Many items of interest were discussed. The most important being, poor service and frequent breakdowns on our Phoenix Relays Cable Television. It was felt that for the increased price they are now charging, they are not providing a proper service, and that the Association should press for the Area to be re-wired. It was arranged that a deputation from the Association should meet with the General Manager and Service Manager of Phoenix Relays at an early date.

A motion was passed that the annual subscription should stay the same as last year: £2 membership, £1 for widows, widowers and retired people.

The following Committee was duly elected:

Chairman: Mr. John Doran, Fortfield Grove.
 Vice-Chairman: Mr. Vincent Tyrell, Fortfield Rd
 Hon. Treasurer: Mrs. E. Heffernan, Templeville Dr.
 Hon. Secretary: Mrs. C. O'Regan, Templeville Dr.
 Mr. D. McCowen, Templeville Road; Mr. M. Meagher, Templeville Drive; Mrs. J. Henderson, Templeville Road; Mrs. E. Tobin, Templeville road; Mr. P. McGovern, Fortfield Drive; Mrs. H. Moriarty, Templeville Drive.

st. jude's choir

Congratulations to St. Jude's Church Choir winners of the Lombard Cup in Dublin Feis Ceoil. The choir retained the trophy won last year, and were praised by the adjudicator for their singing of "Haec Dies" (Palestrina) and Bruckner's "Locus Isti". The conductor was Miss Orla Barry B.Mus., who herself came 4th in the soprano competition. The choir will also compete in Dundalk Music Festival on 17th April.



37TH DUBLIN (ST. PIUS X) UNIT

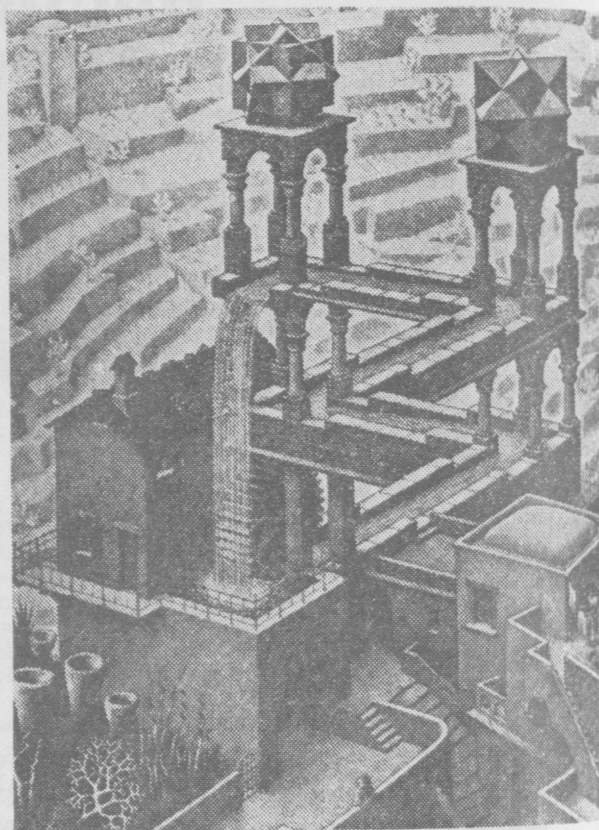
BUILDING FUND

The Finance Committee wish to thank the Anonymous Donor of £25 towards our Fund. We are most grateful.

Templeogue College

300 Club Draw Results of March Draw

- 1st £100 Olive Byrne, 20, College Drive
Collector: Mrs. Hearty
- 2nd £ 50 Mrs. Healy, 92 Cypress Grove Rd.
Collector: Mrs. Fox
- 3rd £ 25 Mrs. Moore, Wainsfort Park
Collector: Mrs. Davis
- 4th £ 25 Patrick McNabb, 19 Westfield Rd.
Collector: Mrs. McNabb
- 5th £ 25 Mrs. Myles, "The Park" Cypress
Downs, Collector: Mrs. O'Kane
- 6th £ 25 Mrs. Whelan, 210 St. Patrick's Rd.
Collector: Mrs. Kelly
- EASTER HAMPER Mrs. Morrissey, Wainsfort Drive
Collector: Mrs. Clabby.



"Waterfall", by M. C. Escher who "misleads the viewer by cunningly exploiting the laws of perspective."

massey bros (FUNERALS) LTD.
templeogue VILLAGE

Flowers, Pot Plants etc.,

For ALL Occasions

→ Delivery Service ←

PHONE 907601

NIGHT PHONE 698207





John Freeney, Phibsboro
Denise Deegan, Wainsfort Rd
Married Mar. 10, 1983
St. Pius X Church

Elisabeth Sheehan
Noreen Halligan
Susan Doyle
1st Prize Winners
Feile Bhríde



Muireann Ardiff
Winner of Ronan Kavanagh
Trophy



YOUNG FINE GAEL

Yes, Young Fine Gael is certainly going from strength to strength - to use our favourite cliché.

The Galway Young Fine Gael conference was an eye opener for all of us. Young people from all over the country made for an invigorating atmosphere.

Eighty motions questioning almost all aspects of Irish life were debated. Important issues such as the environment, education and employment were sadly ignored by the media who concentrated on one controversial issue and to our annoyance did not even report our attitude accurately. To put the record straight, we questioned the real benefits of spending over £1 million on a pro life amendment. To imply from that debate that Young Fine Gael favours abortion is untrue and unfair.

Perhaps it is arrogance or just youthful enthusiasm, but we felt a sense of unity and of importance in having an opportunity to question the Government Ministers. Gemma Hussey was closely questioned about the education. Few of us were unmoved by the courage in facing the real issues in education. She has spoken about the necessity for revising the curriculum to provide real education for living, for work and for leisure. We believe she is also the first Minister of Education to question the points system for University Education and we look forward to improvements in the system soon. George Birmingham spoke of his responsibility as Minister of State for Youth Affairs. This Ministry is now attached to the Labour Department rather than Education, a significant change. His understanding of the problems of the unemployed, particularly young people, and of the inadequacies of the support system for them, is encouraging.

The Templeogue Branch made a very significant contribution to several debates. Susan Ereen called for a reform of the limited liability laws. Declan McKenna made a strong call for the reform of semi state organisations. Martin Lynch spoke about the need for reform in the planning laws, and about the reform of our constitution safe-guarding the right of the individual.

Congratulations to Martin Lynch who was elected to the National Executive. With a grin broader than a Cheshire cat's he claims he has no idea how he got so many votes - well we think you deserved them and look forward to much more activity in the Executive in the coming year.

Our next branch meeting will be in Terenure College on 28th March 1983 at 8.00 p.m. As always, anybody interested in getting to know us better is very welcome to attend our meetings. If you are interested, why not contact our Chairman - Martin Lynch, at 905663, or our Secretary Barbara Litton at 904389.

SUSAN EREEN
PUBLIC RELATIONS OFFICER.

friendly chat

Conversation is the most sociable of all human activities. Its charm is that it does not really start from anywhere, and no one has any idea where it will go as it meanders or leaps and sparkles or just glows.

The enemy of good conversation is the person who has "something to say". Conversation is not for making a point. Arguments may often be a part of it, but the purpose of the argument is not to convince. The one place not to have dictionaries is in a sitting room or at a dining-table. Look the thing up next morning, not in the middle of the conversation. In fact, the best conversationalists are those who are prepared to lose. When they see that the moment for one of their best anecdotes has passed, they are ready to let it go.

R. S.

CREDIT UNION

Rather than have a report on the 12th A.G.M. of Templeogue & District Credit Union Ltd., it is probably more helpful to review the operation of the Credit Union.

TO JOIN you must live or work within the area covered by our "common bond" which would include Greenlea, Parkmore, Lavarna, Fortfield, Rathdown, Templeogue, Springfield, College, Wainsfort, Templeville, Cypress, Ashfield, Glendown, Orwell, Domville, Templeogue Wood, Willington, Osprey, Kennington, Limekiln and Mountdown.

All that is necessary is to fill out two very brief forms - a Membership Application Form and a Nomination Form (which nominates who should get your savings in the event of your death) - and to pay a once-only entrance fee of 50p.

OWNERSHIP of the Credit Union belongs to its 900 members. Once you have £1 in shares (all savings are in the form of shares) you are a member and have the same rights as any other members. The Credit Union is a co-operative society which is run by a Board of 15 members elected each year by the members to run it on their behalf. Each member has one vote, irrespective of the amount of savings.

SAVING is one of the objects of the Credit Union. As you would expect with a co-operative members are encouraged to save so that the pool of money thus saved is available to be loaned out to those members needing a loan. Savings now total £250,000.

LOANS are applied for by filling out a loan application form with the help of one of the members of the Credit Committee. The Credit Committee consists of 4 members of the Board. They look after the granting of loans. Last year loans totalling £210,000 were given out to members - and the amount currently out on loan is £250,000. The members borrowed amounts varying between £20 and £5,000 in order to pay motor insurance premiums, for wedding expenses, for house extensions, to buy furniture, for holidays, to buy a bicycle, to buy a car, etc.

Repayments can be over an agreed period up to 3 years with instalments payable weekly or fortnightly or monthly. Each time an instalment is paid the interest is paid on the reducing balance. The rate of interest has for many years been fixed at slightly over 12% per annum. For example, a loan of £100 repayable over 50 weeks would be repaid as follows:

Week	Repayment	Balance	Interest
	£	£	£
1	2	98	0.23
2	2	96	0.23
3	2	94	0.22
4	2	92	0.22
.....
47	2	6	0.02
48	2	4	0.01
49	2	2	0.01
50	2	Nil	-
TOTAL:	£100		£5.94

Interest paid on a loan of £200 repaid over 50 weeks would be £11.88, and so on.

(Next month's review will cover insurance and dividends).

templeogue hair and beauty studios

(OVER Massey Bros)

Main St., Templeogue.

OPEN MONDAY TO SATURDAY
LATE NIGHTS THURSDAY AND FRIDAY

SHAMPOO AND SET	£ 2.30
PERMS	£ 9.95
COLOUR	£ 5.50
CHILDRENS DRY TRIM	£ 1.00
EAR PIERCING	£ 2.50

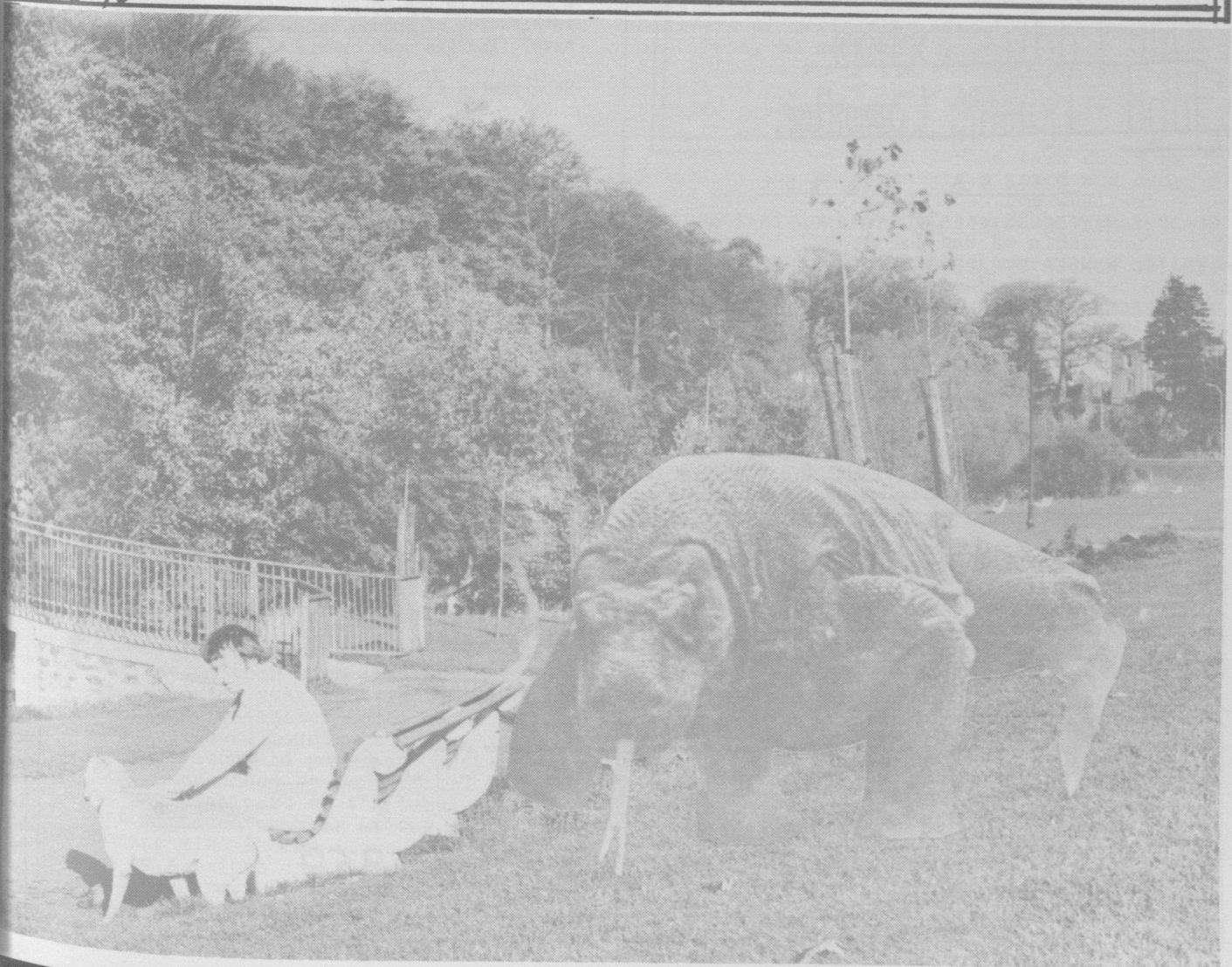


CONCESSIONS TO O.A.P. AND WIDOWS

BEAUTY AND HEALTH TREATMENT BY APPOINTMENT ONLY

MAKE UP CLASSES

EVENING 7 P.M.



A Festival of Fashion

will be held in

St. Mary's Rugby Club

Templeville Road
on

Saturday 23rd April 1983

at 8pm

Guest Model: Helen Swift

admission £3; students £1.50

organised by

Our Lady's School
Fund - Raising Committee.

SPECIAL NOTICE

READERS MAY BE INTERESTED TO KNOW THAT A LIMITED NUMBER OF ALL BACK ISSUES OF THE TEMPLEOGUE TELEGRAPH ARE AVAILABLE.

SPECIAL COPIES AUTHOGRAPHED BY EACH MEMBER OF THE EDITORIAL BOARD WILL BE AVAILABLE AT £5 PER COPY UNTIL 1ST APRIL, 1984.

POETRY CORNER

WHAT HAPPENS WHEN I'M ASLEEP

I'm going to tell you what happens what happens when I'm asleep.

I stayed up one night to peep
To see what happens when I'm asleep.

I saw Bunkey coming down coming down from the shelf.

What a smart little monkey he was
And he began to juggle with the delph.

Teddy got up from his beddy
And began to play with Neddy
They all sat around in a ring
And waited for their story teller Reddy.

Now I've told you what happens what happens when I'm asleep

I stayed up one night to peep
To see what happens when I'm asleep.

Sinead Barrins.

What is a HUSBAND?

A husband is a person who remembers your birthday, but not your age.

He is a man who stands by you through all the troubles you wouldn't have, if you had stayed single.

A husband is the enigma who copes admirably with the intricacies of income tax and insurance but who can never find his comb or his tie.

He grumbles at the dog, then, before going to bed, sneaks back with an old coat to wrap around the animal because it is a cold night.

A husband is the man you let think rules the roost.

A husband is someone who wakes you up when baby is crying.

He gently rocks the baby to sleep singing rugby songs.

A husband is someone who hangs around hungrily when a meal is cooking - then disappears when it is served.

A husband is the only labour-saving device you can cuddle.

Quoted in "What is a husband?".

At The White Fathers, Templeogue Bridge.

EASTER REVISION COURSE

Leaving and Intermediate

→ MOST SUBJECTS ←

for details phone 905816 - 880859

LaFosse Lecture 1983



In keeping with the high standard that they have maintained over the years, the organisers of the LaFosse Lecture at Our Lady's School arranged a thoroughly interesting and provocative talk for March, when Professor George Eogan talked about the Late stone-age passage grave at Knowth by the Boyne which he has been excavating since 1962.

Professor Eogan described how about 2500 B.C. the passage-grave builders moved westwards from Brittany and occupied the country north of a line from Sligo to Wicklow. These people must have been successful farmers as they had sufficient spare time to engage in the building of elaborate megalithic tombs for the cremated remains of their dead. The burial mounds or tumuli which contained the passage graves were constructed with great skill, under the direction of engineers and architects, from sods, boulder clay, shale and stones. Knowth, on which Professor Eogan worked along with Newgrange and Dowth is situated at the great cemetery of Brugh-na-Boinne downstream from Slane.

The main mound covers an area of $1\frac{1}{2}$ acres and is 30 feet in height. The large kerb stones edging the mound, which number over 112 are 6 feet long and 4 feet high and must have been moved some considerable distance to the site. Many of these are decorated with spirals, zig-zags, circles and other designs which have probably some religious significance. Professor Eogan described the manner in which the archaeological dig was planned and executed. The uncovering of the kerb stones, the finding of the western tomb with its 114 foot long passage in July, '67, the uncovering the more spectacular eastern tomb with its 140 foot passage the following year and finally the excavation of the 17 smaller tombs close to the main mound. These mounds, two of which are shown above were about 14 yards in diameter and were also surrounded by kerbstones.

The most exciting part of the tumulus was the massive bottle shaped chamber at the end of the eastern passage with its magnificent corbelled roof rising to a height of nearly 20 feet above the floor of the cruciform tomb. In the northern recess of this chamber stood a large

elaborately carved sandstone basin which at one time held cremated remains. This piece of sculpture was about 4 feet in diameter.

The speaker showed many fine slides which gave a good impression of the skill of these builders of megalithic times, which could profitably be emulated by some of our present day builders, whose offices begin to collapse within 10 years of their building. These old passage graves on which no cement was used have stood for 4,000 years.

The interest shown in the talk could be judged by the many questions asked and many hands were still raised when the Chairman Professor David Brown of the Educational Committee of the school had to close the meeting because of the late hour. One of these questions came from a man who had lived near the site and he wished to know how the tumulus would look when the archeologists had finished excavating. He was assured that the Board of Works would leave it in good shape. Another question concerned an ornamental basin in one of the chambers, which appeared to be cracked. The question was, was it cracked when the tomb was opened or did it happen subsequently? It was pointed out that Knowth was probably used intermittantly over a long period of time so perhaps it had been broken during one of these later periods.

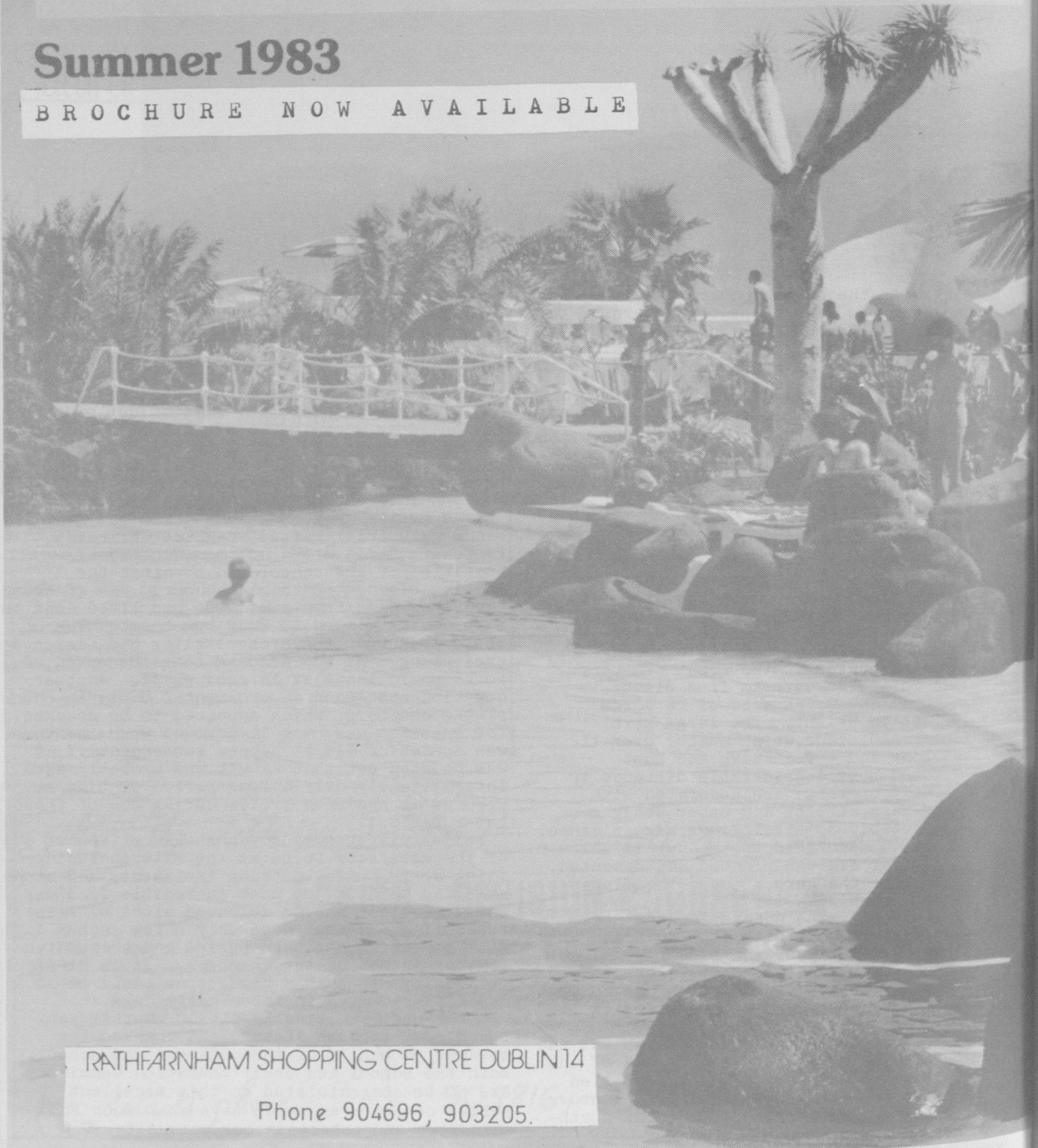
Finally Professor Eogan showed slides of some of the artefacts found at the site including flint arrow heads, cutting implements and stone axes and beads. The most incredible find was an intricately carved coloured piece of flint resembling a hammer head only a few inches in diameter which had been buried under cremated remains in one of the chambers. It is difficult to imagine how such a hard stone could be so skillfully carved in those early days.

The Chairman finally closed another very successful LaFosse lecture and thanked the speaker on behalf of the audience and school. Both the school and their Education Committee are to be congratulated on this excellent series of lectures which have done much to enlighten and entertain our community. *R.P.K.*

EUROTRAVEL

Summer 1983

BROCHURE NOW AVAILABLE



RATHFARNHAM SHOPPING CENTRE DUBLIN 14

Phone 904696, 903205.