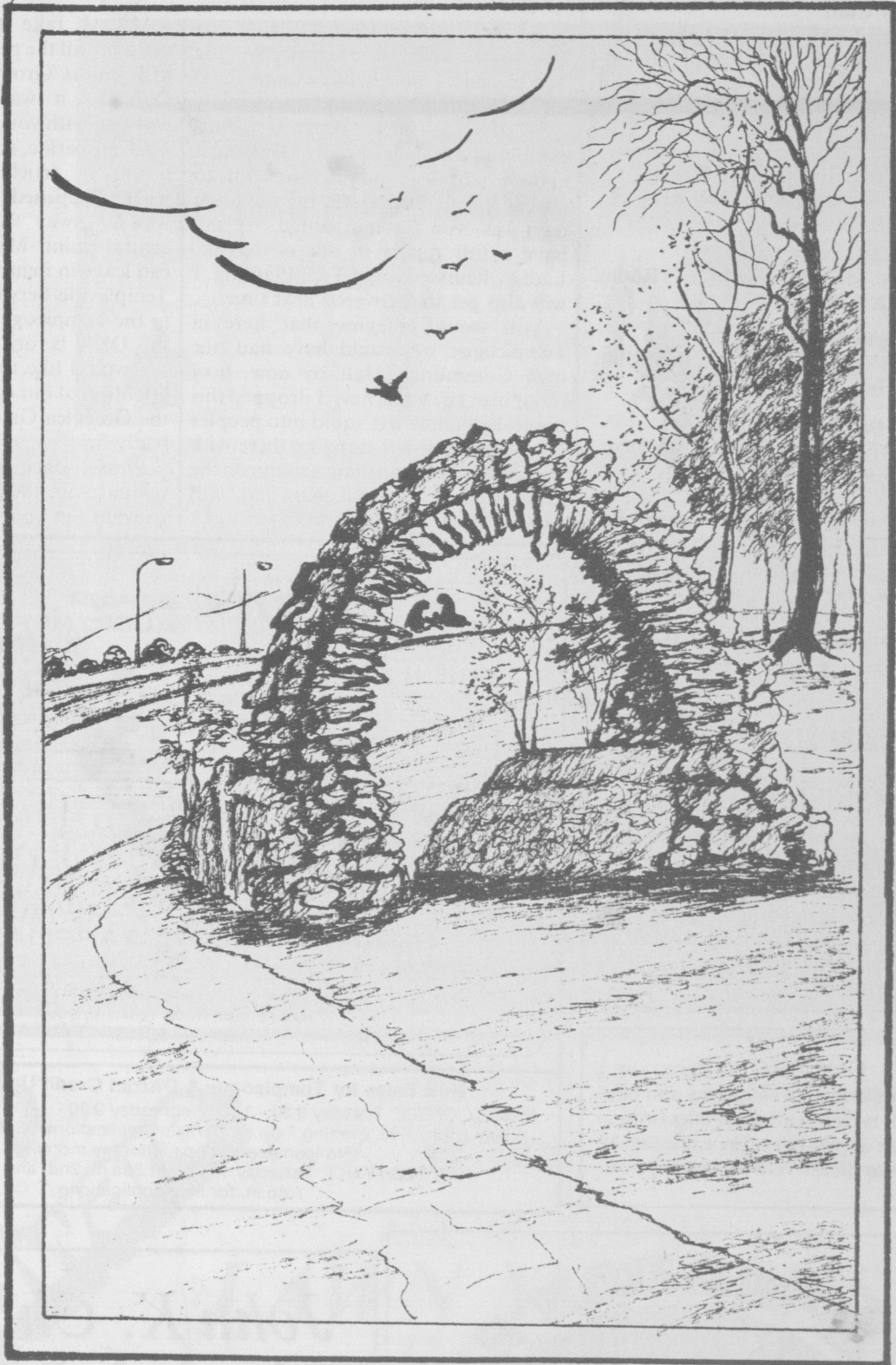


37



TELEGRAPH

EMPLOYEE O G U E



News, Views & Pictures

MARCH 1988

50p

Diary Dates

St. Pius Junior Youth Club:
Sunday, St. Pius Hall.

Thursday Club:
Every Third Thursday, at 2.30p.m.
St. Mary's Room, Pius X Church.

Templeogue Senior Youth Club:
1st, 2nd, 3rd. Saturday each month,
St. Pius School.

Templeogue Horticultural Society:
3rd. Wednesday each month at 8p.m.
Our Ladies School.

Solos and Friends:
Every 3rd. Monday in St. Mary's Room.
St. Pius X Church.

Templeogue Ladies Club:
1st. Wednesday each month in St. Pius
School Hall.

Templeogue Bridge Club:
Every Friday night, 7.30p.m.
Templeogue College.

Please send information - photos
articles for publication by April
18th. next to 49, Wainsfort Park.
Phone 904168

Dermot Kelly SPINOLOGIST

attends at Shopping Centre, 46
Fortfield Park,

on Tuesday 10 a.m. - 1 p.m.
also every Saturday afternoon from
4 p.m. to 7 p.m.

COLLECTORS

We would like all collectors who have
not yet returned all the monies to do so
as soon as possible - The expenses are
heavy so please relieve the pressure.

McMAHON'S DRY CLEANERS AND LAUNDRETTE

Specialists in the cleaning of Silk, Fur, Whites, Leather and
Suede Garments.

Launderette - Invisible Mending - Alterations

Open Monday-Friday 8-6.15, Saturday 9-6.

Templeogue Village. Telephone: 904098.

Knocklyon Shopping Centre. Telephone: 942266.

The Templeogue Telegraph

49 Wainsfort Park, Terenure.
Telephoe 904168

We held off printing till after the
Historical Exhibition run by the
Templeogue Ladies Club - I was there
for the opening night, and it was really
impressive - they organised this
exhibition in their usually competent
and efficient way, that we have come to
expect. From all reports the next two
days was even better attended. We will
have a full report in our next issue.
Ladies, I missed your Tree Planting, I
will also get that covered next time.

You would imagine that here in
Templeogue we would have had our
own Community Hall by now, how
often over the years have I dropped this
bombshell come wet squid into peoples
laps, only to be left standing there with
the suggestion left rolling around on the
floor - well, I'm doing it again and I will
let you know the outcome.

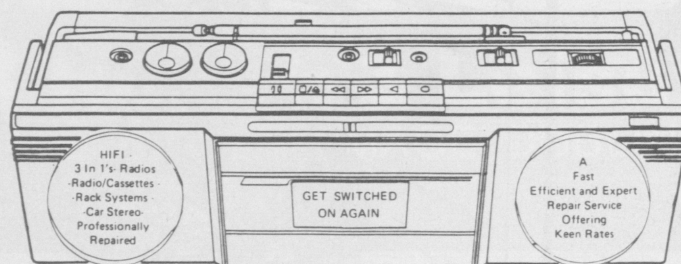
May I take this opportunity in
thanking all the people who come to the
Millennium Group meetings in Bishop
Galvin - it was great meeting and
working with you, it showed how easy it
is to cooperate, so come on now, I was
promised articles and information,
what's happened to it, maybe we are just
too far away from you, lets find a
central point. May I suggest that you
can leave in items into Ernie Mooney's,
Templeville Service Station, addressed
to the Templeogue Telegraph. I will get
this OK'd before you read this.

I would like to once again draw the
attention of our councillors and TD's to
the Greenlea Green at night, it is, very
badly lit!

Please, once again, this is just to
remind you, the Telegraph needs you,
so whip out your pen and get writing.

A.F. AUDIO

REPAIR
AUDIO, HI-FI EQUIPMENT



SMALL DOMESTIC APPLIANCES

KETTLES - HAIR DRYERS - IRONS - TOASTERS - ELECTRIC FIRES

Community Enterprise Centre
17 Rathfarnham Road, Terenure, Dublin 6
Telephone: 903237

New times for Templeogue & District Credit Union Ltd.

ORWELL OFFICE: Tuesday 9.30 - 1.00, Wednesday 9.30 - 1.00, Thursday 9.30 - 1.00,
Friday 9.30 - 1.00, evening 7-8p.m. (for loan applications). Saturday 10.00 - 11-30
(No loan applications Saturday morning).

FORTFIELD OFFICE: Saturday 10.00 - 11.30a.m. 2nd. and 4th. Tuesday,
7-8p.m. for loan applications.

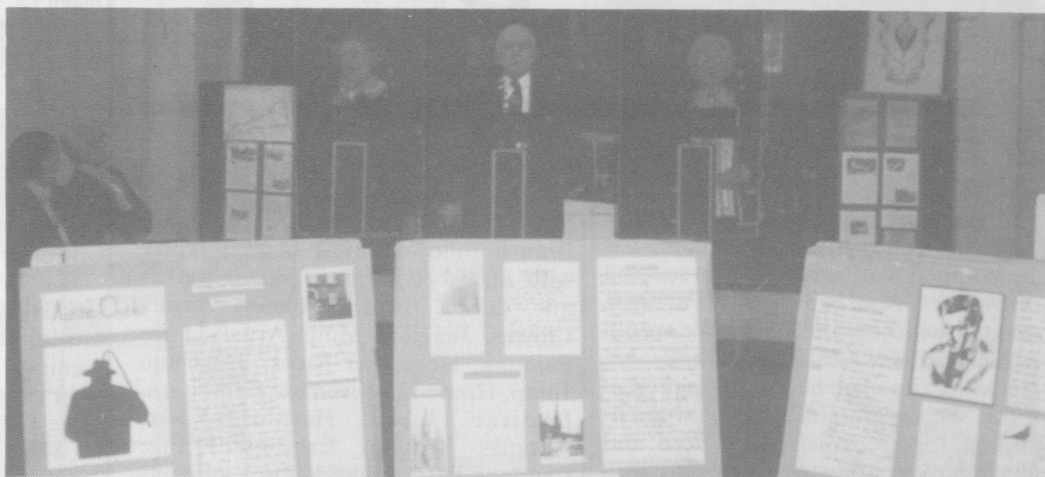
John K. Chambers & Co.

Auditors and Accountants

Templeogue Village, Dublin 6.
Telephone 904454/901700

The Great Success of Templeogue Ladies Club Historical Exhibition

REPORT NEXT ISSUE



Opening Night



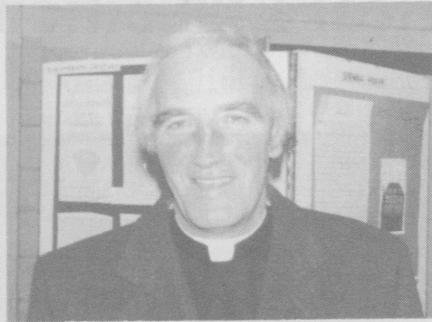
WEBB
Hardware

Have it ready
when you want it!

ALL MAKES OF
LAWN MOWERS
/SHEARS

Sharpening and Repairs
Templeogue Village. Phone 909831

Welcome an old face with a new hat



The announcement on 9th. March that Rev. G. Colleran, Senior Curate, has been appointed Parish Priest to succeed Very Rev. F. Lee in St. Pius X Parish, is greeted with joy and relief. We would not like to lose him as he has endeared himself to us since he was appointed in 1983. We are grateful to our new Archbishop for recognising our need and thank him for allowing him to stay with us. We ask God's blessings on all he does, and wish him many fruitful years ahead, full of satisfaction in his various undertakings. Beirimid bua agus beannacht.

May O'Neill, parishioner.

Editor: Bless me Father, for I have sinned. I don't mean "old" in THAT way.

St. Judes G.A.A. Club Big Draw

I must say that I was very impressed with the Club House of St. Judes G.A.A. Wellington Lane, when I was there at the launching of their new Private Member Draw (now if you want to win a Nissan Bluebird - Continental Holidays, Nissan Sunny, Fitted Kitchen and lots of money, from £12,000 to £100 with draws every month from May this year - so if you want to be in - do so now.

I learnt from Charlie Moran, Chairman of the Club that they have over a 1000 members - 600 of these are full playing members, there are no less than 32 teams from under 10 to senior teams who play football, hurley and camogie - its facilities are open to the whole Community with hall, lounge and rooms for meetings of local clubs and associations. The draw is in aid of completing the payment on their Club-house/Community Centre. 'Holy God' I nearly forgot - Mick Lally was there to break the bottle of champaign over Charlie Moran to launch the draw.

Terry Gogan

Spawell

Hospitality & Leisure Centre

Conferences - Trade Shows - Exhibitions

Dublin 12. Telephone (01) 901301 & 901826.
Golf and Sports Enquiries. Tel: (01) 907990.

Millennium Festival Diary

Opening Day Sunday 3rd. July:
12.00 Mid-day beginning with a Jazz/Brunch followed by a Garden Party with Strawberries and Cream, Barbeque, Garda Band, Bouncing Castle, Clowns, Jugglers, Mime Artists, Face Painting, Helicopter Rides, Parachute Jump, Home Improvement Exhibition, Festival Queen, Heraldry, Art, Antique, Sculptor Exhibition, Jazz Bands on Patio, Kiddies Disco and outside Broadcast.

Monday 4th. July:
Barbeque and Music in the afternoon, Bouncing Castle, Antique, Craft, Heraldry and Sculptor Exhibition and Motor Show.

Evening: 7pm - 9pm Open Air Pagaent on the banks of the Poddle and Saints versus Sinners Snooker Competition.

Night: Cabaret and Talent Competition followed by Dancing.

Tuesday 5th. July:
As Monday afternoon:
Evening: Tug of War involving local Clubs and Organisations, Fashion Show followed by Dancing.

Wednesday 6th. July:
As Monday afternoon.
Evening: Saints versus Sinners Tennis

Competition, 10K Road Race, Rob Strong Band to round off the evening with prize presentation.

Thursday 7th July:
As Monday afternoon.
Evening: Saints versus Sinners Pitch and Putt Competition, Poetry Reading in the Exhibition Room, Hair Show in the Wellington Room and Gala Charity Cabaret Show.

Friday 8th. July:
As Monday afternoon.
Evening: Cycle Race, Personality Look-alike and Fancy Dress Competition.

Saturday 9th. July:
Afternoon: Bonny Baby Competition, Cookery Demonstration, Jigsaw Jamboree, Cake Sale, Clowns, Jugglers, Mime Artists, Helicopter Rides, Kiddies Disco, Yard of Ale Competition, Game for a Laugh Competition, Barbeques, Live Music and Face Painting.
Evening: Laser Show followed by Cloud Nine Discotheque.

Final day Sunday 10th July:
Sunday Morning: Commemorative Plaque Laying Ceremony.
Sunday Evenings: Major outdoor Concert in the Golf Range from 2pm-8pm.

St. Pius X Summer Project

Cheese and Wine with live music and dance
on Thursday, April 21st., 1988 at 8.00p.m.
in Lakelands R.F.C., Terenure.

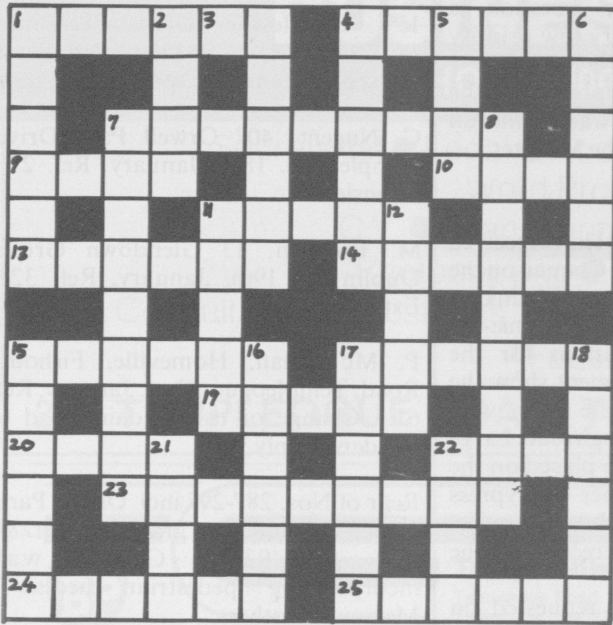
Tickets £4.00

Tickets are available from Peter Hurley at the church sacrastry
each Sunday morning from 10.30 - 1.30p.m.
Tickets are also available on the night.

PLEASE HELP SUPPORT THE CHILDREN OF YOUR
COMMUNITY

Thanking you in advance
Mel Elizabeth Duffin, The Secretary.

D. K. CROSSWORD



ACROSS

1. Cake. 7. Signal. 10. Plough. 13. Use.
4. Edge. 9. Sign. 11. Hymn. 14. Over There.

15. Leap.
17. Advancing.
19. Fish.
20. Roster.
22. Peak.
23. Skill.
24. Strain.
25. Curtains.

DOWN

1. Furrow.
2. Uniform.
3. Restless.
4. Scarcely.
5. Enraptured.
6. Cylinder.
7. Moderate.
8. Obstacle.
11. Dot.
12. Ascend.
15. Pieces.
16. Salutes.
17. Ejected.
18. Imagines.
21. Pivot.
22. Continent.

Answers on Page 14.

Irish Life VIKING ADVENTURE

at St. Audeon's Church, High Street.

Visit the site of the first settlement and see this incredible reconstruction of a street in Viking Dublin and *step back in time to the year 988.*

Experience this journey first through video, then accompany a Viking as he or she introduces you to the everyday life

of 1,000 years ago in Dublin.

See the houses where they lived and worked: capture the sounds and smells and feel the past.

This is heritage with a difference - a historical exhibition *brought to life by actors.*

After your journey through time browse in one of Dublin's most unusual gift shops with its range of quality gifts and Viking reproductions.

Open Daily 9am - 6pm.

Other times by arrangement.

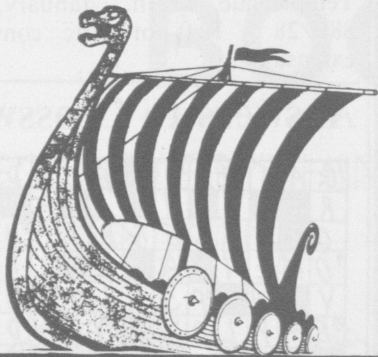
How to get there:

DART - Tara Street, free bus to Wood Quay.

BUS

Nos. 78, 78a, 78b from Fleet Street.

TRAIN - Heuston Station.



Are you bored on Wednesday nights?

*Do you suffer from Televisionitis?
Tired of doing the same thing every day of the week?*

If you answer yes to all these questions then you need serious help.

And I know how to help you!

I used to suffer these symptoms but not anymore because I discovered the Templeogue Inn Jazz nights on Wednesday Nights. Its the only thing that can help you. It has changed me into a new and fun person to be with! So why don't you visit Doctor Lawless's Jazz Night on Wednesday night upstairs in the Templeogue Inn.

It's only £1 cover charge and if you suffered from the above and you visit the hospital it would cost you £10.

VILLAGE BLOOMS

FLOWERS FOR ALL OCCASIONS

Fresh and Silk Flowers,
Wedding Bouquets,
Delivery Service,
Greeting Cards,
Mass Cards,
Soft Toys,
Floral arrangement
of all types

We also stock Indoor and
Outdoor Plants

HOURS OF BUSINESS

Monday-Saturday 9.30-6.30.

Sunday 11a.m. - 4p.m.

291 Templeogue Village,
Dublin 6.

Telephone: 900967



Dr. John O'Connell

FIANNA FAIL CANDIDATE

Constituency Advice Centres:

Monday: 197 South Circular Road,
7p.m.

Tuesday: Ashgrove Community Centre,
The Coombe, 7.30p.m.

Wednesday: Community Centre,
Limekiln Lane, Perrystown, 7p.m.

Thursday: 197 South Circular Road,
7p.m.

Friday: Manager's Office, Crumlin
Shopping Centre, 7p.m.

ROY HAND

WHO CREATED THE
SUPERB EVERCLEAR TV
SERVICE, NOW AT
CRUMLIN CROSS
Opposite Submarine Bar

Roy Hand T.V. Ltd.
562899/562800
562900

TV VIDEO REPAIR SPECIALISTS

- Rental Purchase
- Straight Renting
- Best Cash Discounts
- Special TV/Video
- Package

LATE NIGHT OPENING
Thur.-Fri. till 9p.m.

POLITICAL SCENE

During recent weeks I have been following up a number of items which are of interest to the community.

1. The painting of lamp standards:-
The E.S.B. is responsible for their own poles. The Council is painting a small number this year.
2. The maintenance of the pathway system across Cypress Lawns:-
There is no money in the Estimates for 1988 to carry out this work but I am hopeful this will be included in the Social Employment Scheme.
3. Requests for 'Caution Children' signs.
The Council are not supplying these but if the residents wish to erect some they should contact me.
4. Request for two small paths across open space at the corner of Glendown Avenue/Park. Once again there is no finance for this purpose, but I have asked for this to be included in the Social Employment Scheme.
5. The provision of a pedestrian crossing on the Tallaght side of the Wellington Roundabout. Unfortunately no finance this year.
6. Bad drainage on the open space; Templeville Road. The installation of a major drainage scheme is required for which there is no finance available.
7. Request to complete the pathway from Rossmore Lawns to St. Michael's entrance:
This pathway was started in 1987 but unfortunately the Council ran short of funds. Once again I have requested for this item to be included in the Social Employment Scheme.

Councillor Stanley Laing, P.C.
Centres: Templeogue Village.
Every Saturday 10.15.
The Credit Union O.S.C. every Saturday 12 o'clock.
Phone 965571.

Templeville Road/Fortfield - Traffic Signals.

Motion Councillor S. Laing.

That this Committee recommends to the Dublin County Council that the Minister for the Environment be requested to provide finance for the replacement of the pedestrian traffic light at the junction of Templeville Road/Fortfield Park with a full traffic light with a pedestrian phase as approved by the Traffic Study Group as there is a large increase in the traffic causing serious concern to the residents of the area.

Report

There is a number of traffic schemes (estimated cost in excess of £1m) awaiting funding none of which will be undertaken in the current year due to the decision to reduce the Roads estimate by

£2.5m. The scheme in question is considered to have a very low priority in the overall list.

This proposal was approved by the Committee. It will go forward to the full council for sanction to the Minister.

Dear Resident,

The following is a letter I have received from the Dublin County Council on the present situation of the road linking Domville Estate to Cypress Downs:-

The planning permissions for the Cypress Downs development show the road joining the Domville estate with Cypress Downs as a through road. Large concrete pipes have been placed on the roadway by the developer of Cypress Downs thus prohibiting through traffic. Walls have also been erected on the footpaths.

The developer was requested in December 1987 to remove the pipes and the walls and in recent discussions on the matter has confirmed that he will submit a planning application to retain the impedimenta for a temporary period on or before the 29th. February 1988.

Failure to submit this planning application by that date will result in legal proceedings being initiated.

Please contact me at any one of my centres as per attached list any Saturday or by phone 905571. If you wish to comment on the proposed application. Regards,
Councillor Stanley Laing P.C.

Planning Permission

157 Templeville Drive, Terenure. 18/1/88, Ref. 87B/1219. Permission refused for domestic extension.

C. Nugent, 407 Orwell Park Drive, Templeogue. 18th. January, Ref. 29 - extension.

M. Brennan, 13 Glendown Grove, Dublin 12. 19th. January, Ref. 32 - Extension.

P. McTiernan, Homeville, Firhouse Road, Templeogue. 22nd. January, Ref. 61 - Change of use of dairy yard to builders supply yard.

Rear of Nos. 287-297 incl. Orwell Park, Grove. Permission granted 18/1/88, Ref. 87A/931 - Garden wall incorporating pedestrian access/T. Massey and others.

Decisions of AN BORD PLEANALA on planning appeals:
Rockhampton Securities, Orwell Estate, Templeogue, 1st. February, Ref. 87A/1380 - 6 Houses (A.I.).

D. Coombes, 21 Kennington Lawn, Templeogue, 4th. January, Ref. 88B/2 - Extension and Garage Conv.

P. McGee, rear 237 Whitechurch Road, Rathfarnham, 11th. January, Ref. WA2454 - Bungalow.

G. F. Griffin, 6 Cypress Grove, Templeogue, 15th. January, Ref. 88B/28 - Ret. of attic conv. and extension.

Answers to Crossword

1	G	A	T	2	E	A	3	1	8	B	0	5	R	D	E	R					
R		V	N		A	A															
0	7	E	L	E	G	R	A	P	H		L										
9	O	M	E	N		A		E		10	S	I	L	L							
V	M		11	P	S	A	L	12	M		N		E								
13	E	M	P	L	O	Y				14	Y	O	N	D	E	R					
15	S	P	R	I	N	G				16	O	N	W	A	R	17	D				
C		A																			
18	R	O	T	A						19	A	C	M	E							
A										20	E	X	P	E	R	T	I	S	E		A
P																					
21	S	T	R	E	S	S				22	D	R	A	P	E	S					

Support your
advertisers
- they support you.

J.K.C. Insurances

Life and Pension
Consultants
Unit-Linked Funds
Guaranteed income and
growth bonds.

TEMPLEOGUE
VILLAGE,
DUBLIN 6

Tel: 901700-904454

TEMPLEOGUE BUSINESS CENTRE

PHONE: 900265. FAX: 907428.

Secretarial ● Legal ● Accounting ● Quotations ● Invoicing
Word Processing Thesis
C.V. ● Transcription of Confidential Tapes
Photocopying ● Book-keeping ● Payroll
Consultancy ● Business Address and Telephone Answering Service.
Facsimile Service

291 TEMPLEOGUE ROAD, TEMPLEOGUE VILLAGE, DUBLIN 16.



Templeville Service Station

Templeville Road, Templeogue, Dublin 12.
Telephone: 554022/554068

OPEN 7 DAYS A WEEK
7 a.m. - 12.00 Midnight

Petrol ● Diesel ● Motor Gas ● Sweets ● Cigs
Papers ● Grocery ● Confectionery

TROYS OF TEMPLEOGUE

Telephone: 906486.

* POST OFFICE * NEWSAGENT
* LIGHT GROCERIES
* STATIONERY

Open Monday/Friday 8-6.30:
Saturday 9-6.30:
Sunday 9-1.30.

LEINSTER BOOKMAKERS

FOR EVERYTHING
SPORTING

**No Limit - Singles/Ante Post.
£10,000 - all others**

**Best 'Early Morning Prices' guaranteed
ALL INTERNATIONAL SPORTING
EVENTS COVERED**

All Ante Post
Tax Free

ACCOUNTS
OPENED

186A TEMPLEOGUE ROAD
**TEMPLEOGUE
VILLAGE**
PHONE 906288-9



DUKE TYRES



**Phone
903334**

**MAKE SURE YOU
ARE DRIVING ON
SAFE TYRES**

NOW SUPPLYING MOTOR CYCLE TYRES.

**NEW AND REMOULD
TYRES-PUNCTURES
WHEEL BALANCE
WHILE YOU WAIT**

Batteries Supplied & Fitted

Open 8.30 - 6.00 Monday - Saturday
No half day - open during lunch

TEMPLEOGUE VILLAGE

Spawell
EXHIBITION CENTRE

with

*Home Improvement
& Leisure Exhibition*

Featuring:

- *Huge selection of home improvement ideas.*
- *Garden equipment.*
- *Leisure activities.*
- *Motor show.*
- *Helicopter rides.*
- *Free raffles.*
- *"Live" piranha fish.*



- *Millennium shop.*
- *Full bar and restaurant facilities.*

ADMISSION FREE

Children must be accompanied by adult.

**OPEN EVERY SATURDAY
AND SUNDAY**

12 - 6 p.m.



**Spawell, Templeogue.
Telephone 901826**

Spawell