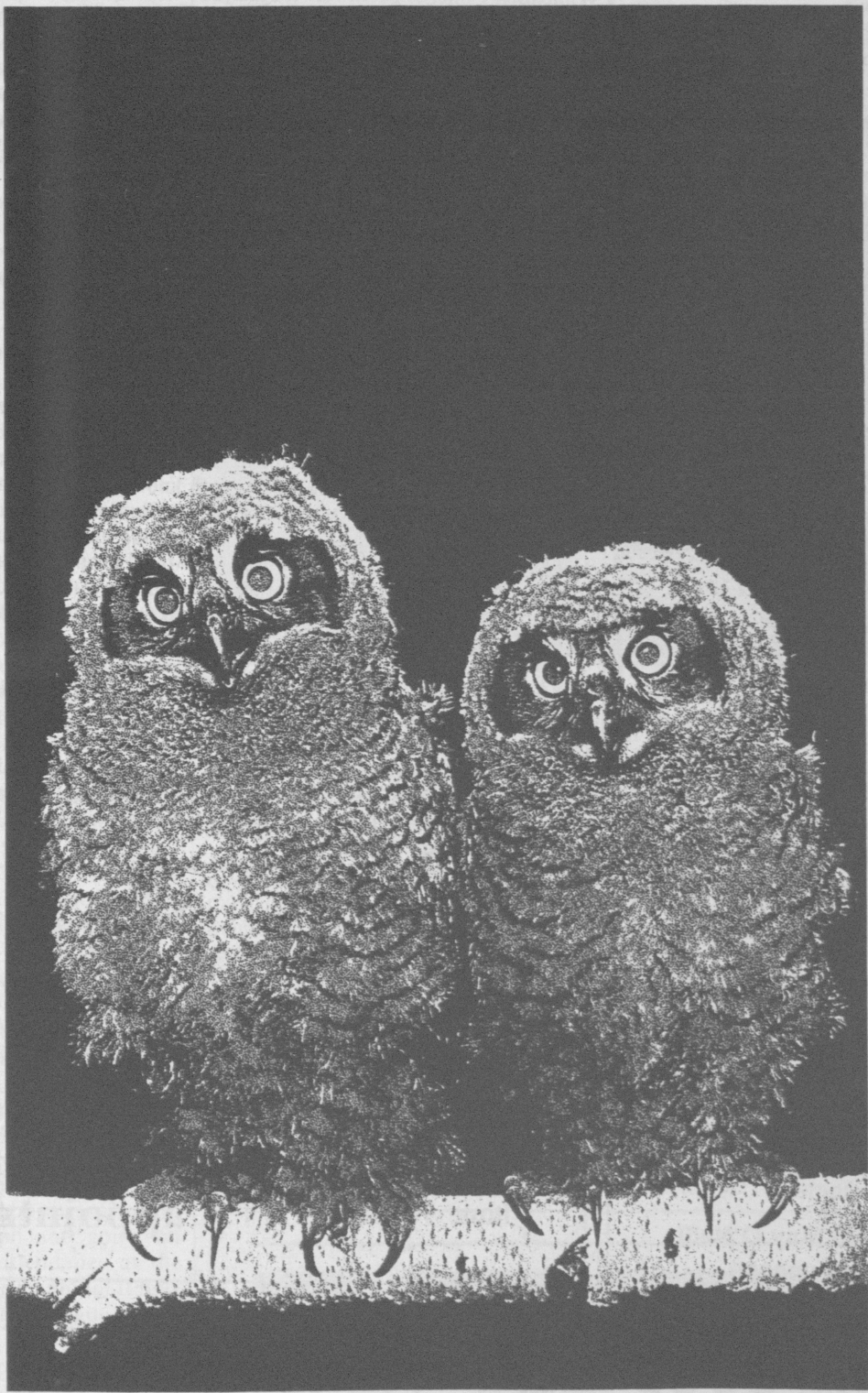


# TELEGRAPH

# EM P L E O G U E



*News, Views & Pictures*  
OCTOBER/NOVEMBER 1987

## Diary Dates

St. Pius Junior Youth Club:  
Sunday, St. Pius Hall.

Thursday Club:  
Every Third Thursday, at 2.30p.m.  
St. Mary's Room, Pius X Church.

Templeogue Senior Youth Club:  
1st, 2nd, 3rd. Saturday each month,  
St. Pius School.

Solos and Friends:  
Every 3rd. Monday in St. Mary's Room.  
St. Pius X Church.

Templeogue Ladies Club:  
1st. Wednesday each month in St. Pius  
School Hall.

Templeogue Bridge Club:  
Every Friday night, 7.30p.m.  
Templeogue Colledge.

Please send information - photos  
articles for publication by November  
30th. next to 49, Wainsfort Park.  
Phone 904168

### Wanna Go To A Party?

Abigails Party  
by Tom Leigh  
Being staged by  
Yew Troupe  
Terenure Parish Hall  
on December 3rd, 4th, 5th & 6th  
at 8p.m. nightly  
*SEE YA THERE*

### CAN YOU HELP?

**Féile Bhríde '88**  
are looking for some sponsors  
contact

**President May O'Neill.**  
Phone 903000



**GOOD IDEA**  
for your  
**Christmas Gifts**

Give a **SUREDRIVE**  
Driving Lesson Gift Token  
Call 'Bill' at 900934  
12 The Green, Cypress Downs,  
Templeogue.

## The Templeogue Telegraph

Once the dark windy evenings close in on Templeogue - the Telegraph rears its head again Phoenix - like, to help cheer you up, we hope!

This time, I feel, we bring good news to some, especially those living in the Wainsfort/Colledge area, of it you like the Colledge/Wainsfort. The Residents Association is also - doing a Phoenix, further in the Telegraph for information on the committee.

A Word of Warning - let it not be as some others in the past, which only had one 'spark plug' to hold it together. I appeal to all those who are honoured with election to the Committee not to be partisan and only see one fault in the area that affects them but to look at the 'whole' - if one part of the Community hurts - the rest hurts and all gather round to fight their cause.

Remember, it must be for the good of the *whole* Community, it does not stop there, it must also take under its wing part of the Social life to make this a more pleasant place in which to live.

The most successful role model you have is your neighbour, The Templeville and Fortfield Residents Association. Ask yourself why is it successful? why has it lasted so long? I would ask those that go forward to the committee - take note - leave your blinkers at home. We are behind it in every way - we wish them the very best of luck - we need a Residents Association in Wainsfort and Colledge.

This year we would like to carry a few words about every Association in the area - if you are not in - how can we know about you. Please get in touch with the Telegraph and if your Association is not mentioned on our pages, please ask your committee to do something about it and let the Telegraph know what is happening.

We congratulate the Templeogue Ladies Club, they have done Templeogue proud once again. They have been successful in coming up trumps in a project Competition run by the Irish National Committee for the European Year of the Environment - (more elsewhere) so the 'Little Man' is back home watching the telly while the wife is out doing very useful Community work - that word again, I make no excuse for using it so much, I like the sound of it .... COMMUNITY.

We have some marvelous artists and painters in Templeogue - would some of them like to submit drawing or painting of Templeogue for inclusion in the Telegraph and maybe on the cover, remembering that unfortunately we cannot yet do full justice to colour. These of course will be returned.

Keep articles - News - Pics - Poems - Stories and Templeogue Memories of old coming in, don't be afraid to put pen to paper - we all like to read it. Please have articles in by November 19th. for the Christmas issue. We will be publishing 6 issues next year at 50p each or six for £2.70.



12 Cypress Park.  
Phone 908486

# Sally & Martin

Make sure of your  
Christmas Hairstyle  
appointment

## John K. Chambers & Co.

Auditors and Accountants  
Templeogue Village, Dublin 6.  
Telephone 904454/901700



# TIDY TEMPLEOGUE

Yes - TIDY TEMPLEOGUE - that is a description that everyone will say about Templeogue if our LADIES CLUB have anything to say about it.

At a very well run and informative meeting held in the Templeogue Inn on October 5th. last the large representative attendance were informed by the Ladies Club under the direction of President Mildred Sargent, Project Secretary, Mary Kiernan and Mrs. Lilly Duffy, who chaired the meeting.

Last March, they received information via the IRISH FEDERATION OF WOMENS CLUBS about a competition run by the Irish National Committee for the European year of the Environment ... EYE ... straight away a working party was set up to take a good look at Templeogue and come up with suggestions to make their 'PROJECT' submission, briefly outlined here.

1) Information-Education - arrange an Exhibition/Lecture about the area in times past and its history and identifying existing buildings which should be preserved.

2) Litter Bins where possible, to help combat the litter problem. Poster and Essay competition for the schools to underline this problem - another theme for the competition would be directed at Dog Owners to appeal to them to prevent their dog fouling the footpaths, verges and grassed areas.

3) Approach Shops etc. to sponsor litter bins - flower boxes and to encourage them to repair and smarten up damaged fronts.

4) Arrange for a bottle Bank to be made available locally in a local supermarket Car Park.

5) The erecting of a bench on the Green at Fortfield Road/Wainsfort Grove, where a large number of the retired of the area and Ladies Club Members play the game of Boules.

They are asking for the full cooperation of all the local Associations Residents - Horticultural, Youth Organisations, Community Council both shopkeepers and businessmen and Templeogue Telegraph and going on the reaction of the attendance at the meeting - it will be forthcoming. It now needs the people of Templeogue to give them a vote of confidence. The Templeogue Telegraph gives an undertaking that this will be encouraged in each and every issue.

Some points from the meeting:

## IRISH WILDLIFE CONSERVANCY

An inaugural meeting and film show to launch the Dodder Valley Branch of the I.W.C. will be held in the Community College, Firhouse, on Monday, 30th. November at 8p.m. All are welcome.

A) It was hoped that the Bottle Bank would be available shortly in the Car Park at Quinnsouth - but the Landlords turned it down - (Maybe Orwell Shopping Centr would step in). Anyone out there like to sponsor a seat or Litter Bin - I'm sure that if some business will, a plaque could be placed on it.

Another point was made about the

disgusting problem of dog fouling - could the Dog Lovers who bring their dogs for a walk - bring a plastic bag with them, to bring back the little 'messages', not only to keep the place clean, but also to keep the roads and greens safe for children.

I was very pleased by the support and assistance given by Liam Web representing the Templeogue Traders Association - I can promise you'll hear more about them on the pages of Templeogue Telegraph in the future.

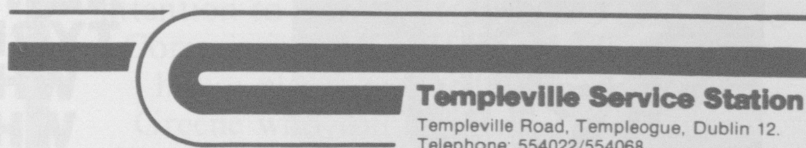


## European Year of the Environment

The following Organisations and individuals were invited to attend Meeting on October 5th.

Attended  
Councillor Sean Ardagh  
Councillor Stanley Laing  
Councillor Martin Lynch  
Ashfield Residents' Association - Mrs. Mary Lombard.  
Cypress Residents' Association - Mr. Gabriel Griffin.  
Grosvenor Court Residents' Association - Mr. Noel Maher.  
Templeville & Fortfield Residents' Assoc. - Mr. John Doran.  
Wainsfort Residents' Association - Mr. Paul McKeon.  
Templeogue Horticultural Society - Mr.

Niall Purcell.  
Templeogue Traders' Association - Mr. Liam Webb.  
Templeogue Telegraph - Mr. Terry Gogan.  
St. Pius X Boys National School - Mrs. Rock O'Malley.  
A.I.B. Sports Club.  
Fr. Lee (Fr. Conlan came in his place).  
Canon Wilson.  
Templeogue Telegraph  
Did not attend:  
Mr. F. J. Feely, City Manager (apology - had a previous engagement).  
Templeogue Community Council - Mr. Tom Gunn.  
Templeogue Credit Union.  
Templeogue College.  
Terenure College Senior School.  
Terenure College Junior School.  
37th. Unit, C.B.S.I.  
St. Mary's Rugby Club.  
Templeogue Tennis Club.



### Templeville Service Station

Templeville Road, Templeogue, Dublin 12.  
Telephone: 554022/554068

OPEN 7 DAYS A WEEK  
7 a.m. - 12.00 Midnight

Petrol • Diesel • Motor Gas • Sweets • Cigs  
Papers • Grocery • Confectionery

**WEBB  
Hardware**

Templeogue Village  
Phone 909831

All Kosangas Heaters  
Still at last year's prices

**ARDENT TARA**  
BOTTLE GAS HEATER

**£69**



**SUPER  
SER**  
BOTTLE GAS  
HEATER

**£69**

**DUKE TYRES**



**MAKE SURE YOU  
ARE DRIVING ON  
SAFE TYRES**

NOW SUPPLYING MOTOR CYCLE TYRES

**NEW AND REMOULD  
TYRES-PUNCTURES  
WHEEL BALANCE  
WHILE YOU WAIT**

**Batteries Supplied & Fitted**

Open 8.30 - 6.00 Monday - Saturday  
No half day - open during lunch

**Phone  
903334**

**TEMPLEOGUE VILLAGE**



# Templeville and Fortfield Residents Association Report

**Neighbourhood Watch:** Since its introduction a few years ago the crime rate has dropped significantly, criminals cannot operate in an area where the public are alert and Neighbourhood Watch has brought home this alertness to us all. Please keep up your vigilance, and anything out of place or suspicious ring the Gardai at once.

**Apologies:** To our good lady treasurer whose name I omitted from the last Telegraph, the treasurer is Ena Heffernan, Templeville Drive. "Very sorry Ena".

**Tidy Districts Competition:** We are very pleased to report getting second prize in our category this year. At last our efforts are paying off. The prize will help our financial position. Congratulations to our neighbouring associations - Ashfield and Glendown on their win.

The competition was judged under the following headings:-

- A. Overall community effort displayed.
- B. Absence of litter.
- C. Presentation of open spaces and grass verges.
- D. Neatness and appearance of gardens and premises.
- E. Special efforts to improve the local environment. The competition is open to every Residents Association in the Dublin County area.

It is hoped that this competition would create a keener public awareness of the litter problem and encourage more local involvement in an effort to reduce vandalism in their area. A map and sketch plan to outline the boundaries of Templeville and Fortfield areas were submitted to the Dublin County Council for this competition.

This competition is important as 1987-1988 is European Year of the Environment. This has been declared by the Council of the European Community and its objective is to

## L. I. or P.A.

*Noted within our Community - lack of interest or plain apathy to invitations to join local bodies engaged in educational/cultural activities for the care of the young as new terms of office commence. Does this reflect that attitude that involvement would create too much nuisance to one's peace of mind, after all everything is going fine and 'I'm alright, Jack?'*

convince each of us to play an active part in maintaining and improving our environment locally as well as nationally. The association have purchased the Environment Pack prepared by An Foras Forbartha, it gives us guidance and ideas on how to improve the quality of our surroundings.

**Public Lighting:** We have requested improved lighting at Fortfield Park and Fortfield Drive, the Senior Engineer, Electrical Section, Dublin County Council has promised to look into the matter urgently.

**Annual Subscription:** is now due, committee members will be calling to each household during the next few months if not already. The subscription has not increased in many years. Financially we just tick over. £2 per household; £1 for Widows and retired people or you can send it to any committee member. If there are any problems you would like your association to help on do not hesitate to let us know when we call.

## Garden Competition:

The Association's Annual Garden

Competition took place during the summer months. The inspection was carried out by a prominent member of the local Horticultural Society. Marks were awarded under the following headings.

*QUALITY* of care and maintenance.

*QUALITY* of lawns.

*LAY OUT*, colour provided by flowers and shrubs.

*GENERAL IMPRESSION:* It was a very difficult task to separate the top gardens and place them in order of merit. The standard was very high. The final decision resulted in the following placings. First prize of Silver Cup presented by Webb Hardware, Templeogue Village was won by - First prize - 149 Fortfield Road. Second prize - 7 Hyde Park. Third prize - 39 Templeville Road, highly commended.

8 Hyde Park.

100 Templeville Road.

53 Templeville Drive.

22 Fortfield Grove.

155 Fortfield Road.

98 Templeville Road.

REPORT BY C. O'Regan.

## Buying or selling your House

We have on our books a number of suitable customers who are interested in acquiring or renting 3/4 bedroom houses in the Terenure/Templeogue Area.

We offer immediate and personal attention to our clients on a No Sale or No Commission basis. If you are buying a house please contact Brian or Noel Greene who will be pleased to discuss your requirements.

**J.B.N. GREENE & CO. LIMITED,**  
Auctioneers, Valuers & Estate Agents.  
48 Fortfield Park, (beside Pius X School)  
Terenure.

Telephone 902436.

# Templeogue Ladies Club

For the hard-working Committee, the summer closedown is a welcome break, the three months following the A.G.M., seem to be the busiest time of the Club year. During that time the Committee has to contact New Members, collect Annual Subscriptions, organise the many Competitions which take place at this time of year and of course organise the Annual Summer Outing as well as keep up with the normal Club Activities. However it is all very worthwhile as I'm sure anyone who serves on a Committee would agree.

The Summer Outing this year seems to have been a great success. Two coaches left Fortfield Park at 10a.m. on the 26th. May. We had a break in Athlone at noon and left there again at 2p.m. The weather couldn't have been nicer and so the 1½ hour trip on the Shannon and the guided tour of the Ancient Monastic site of Clonmacnoise was a most relaxed and enjoyable experience. We arrived back in Athlone at about 5.30p.m. and after another short break we set off for Bloomfield House Hotel in Mullingar for an evening meal. We certainly put a lot into our day and it was a tired, but happy group that arrived back at Fortfield Park shortly after mid-night.

'Boules' continues each Thursday at 2.30p.m. in Bushy Park and the 'Walking Group' meets every Wednesday at the junction of Templeogue Road and Templeville Road at 10.45a.m., and as everyone is welcome to join in both these activities, there is no excuse for not keeping in touch during the summer.

This month we were hosts to 26 ladies from Ardmore Ladies Club and a very enjoyable evening was had by everyone. The Ardmore Ladies were very impressed by the size of our Club - 262 members as compared with their total of 25 to 30 members - and they were very appreciative of the warm welcome they received.

During the business of the meeting the President congratulated Geri O'Rourke on obtaining 1st. Place in the "Little Gems" section of the I.F.W.C. Flower Arranging Competition, and Mary Kirby and Elizabeth Healy on winning trophies for Old Time and Modern Sequence Dancing at a Social Evening in Terenure.

As always at this time of the year, we made preparation for the Annual Autumn Evening which took place on 18th. October, and we are already talking about the Christmas Dinner which is planned for the 8th. December at the Spa Hotel, Lucan. Of course we have other things to attend to also, we have already pledged support to the Tallaght Welfare Society Sale of Work and will be responsible for the Cake Stall at the Cheeverstown Christmas Fair which was a successful venture in the past two years.

To mark the European Year of the Environment (E.Y.E.) a sub-committee is working hard on a Project to improve our area and we appeal to all residents to cooperate with them so that through a joint effort we can make their various proposals work.

The Variety Group is rehearsing with great enthusiasm for the I.F.W.C. Variety Competition coming up at the end of November and the Drama Group have their first competition of the new season at the Player Will's Theatre between 18th. and 21st. November, when the Dublin Drama Festival takes place. Best wishes to all for every success.

All activities have got off to a good start but the Choir is still in great need of new members, maybe the change of rehearsals from Wednesday to Tuesday nights would suit some members better and encourage them to come along - all who can sing in tune will be most welcome any Tuesday evening in St. Pius X School Hall at 8p.m.

Our new season opened with a very good attendance and the President welcomed everyone back after what, she hoped was an enjoyable holiday. We really got into the swing of things with a most enjoyable Barn Dance which gave everyone the opportunity to mix around and chat in a relaxed atmosphere.

Although we were officially closed for the summer, our ladies continued to take part in all Community Activities. They helped, as usual in the Summer Project and were well represented in the Horticultural Show. Prize-winners at the Show were, Mary Kernan - Templeogue Ladies' Club Cup, Brigid Corr Templeogue Telegraph Cup and Jean Thompson and Bunny Williams were prize-winners in the Flower Section.

Just before the summer break the Drama Group took part in the

Balbriggan Drama Festival when Kitty Keating was awarded a Certificate for her part in "Our Branch in Brussels".

Our Bowlers were equally successful, in the Premier Dairies Competition, Eleanor O'Mahony obtained First Place, Rose Giblin Second Place and Nuala Barnes, Lily Kelly and Maura Heneghan were among the prize-winners.

We have a wide and varied programme organised to brighten the winter evenings ahead and each of our 262 members should be able to find some activity in which she can be specially interested. It is only in joining in these activities that we can get to know other members so we urge one and all to come along to the meetings on 7th. October and get involved at the beginning of the season and so get full enjoyment out of what is after all 'YOUR' Club.

Geraldine Eaton

## BRIDGE CLUB

Templeogue College Bridge Club meets every Friday night in Templeogue College at 7.30 p.m. The aim of the Club is to promote the enjoyment of playing Bridge, a very interesting and challenging card game. All funds raised are donated to the College.

Bridge is a partnership card game which helps the player to gain knowledge and skill to improve their game (we'll provide partners as needed).

The Club is open to all bridge players and new members are very welcome. We have games at senior, intermediate and novice level and are starting bridge classes for beginners the first Friday in October. For details phone 901003, 902105 or 902282.

The committee run a series of competitions for members throughout the year suitable for all standards and at Christmas a party which is always a lighthearted affair.

If this winter you would like to play cards and don't forget no previous knowledge of cards is necessary we will help you to gain knowledge and skill at this absorbing game.

Eileen Fannin,  
Points Secretary,  
Templeogue Bridge Club.



## INSTALL SMOKE ALARMS IN YOUR HOME SAVE LIVES!

### DID YOU KNOW?

- On average 65 people die each year in fires in Ireland.
- Under 12's and over 65' are most at risk.
- The majority of fatalities occur in the home between 8p.m. - 8a.m.
- The smoke given off by modern furnishing materials can kill in seconds.
- Smoke and toxic fumes cause the majority of deaths.
- Smoke alarms are an inexpensive method of alerting you to smoke danger.
- They are widely available and easily installed.
- A smoke alarm is an ideal present at any time - but especially for Christmas.

### SMOKE ALARMS IN YOUR HOME

- Some advice from Firehound.

#### 1. WHAT ARE SMOKE ALARMS.

Smoke alarms are small battery operated devices working 24 hours every day which detect smoke, perhaps while you sleep, and sound a high-pitched "bleep" to alert you to get out

of the house.

#### 2. HOW MUCH DO THEY COST?

Prices vary depending on the type but £15-£20 would be an approximate price for an approved model.

#### 3. HOW ARE THEY FITTED?

As they are not mains supplied, but battery operated, two screws, usually supplied are all that is normally required to fit an alarm.

#### 4. HOW LONG DO BATTERIES LAST?

Batteries last an average twelve months when they should be replaced. Units should be purchased which incorporate a warning tone when batteries run low.

#### 5. HOW DO I KNOW THE ALARM IS WORKING PROPERLY?

Units have a test button fitted which should be pressed weekly to ensure the alarm is operational.

#### 6. WHERE SHOULD THEY BE SITED?

On landing and hallways near to bedroom doors. Outside rooms where there are open fires. Remember to close doors at night however! Two smoke alarms would suit the average home.

#### 7. WHERE CAN I GET SMOKE ALARMS?

From the "DIY" stores, electrical and hardware shops, supermarkets,

department stores and fire equipment companies. Contact the fire Prevention Council if in any difficulty.

#### 8. WHAT SHOULD I LOOK FOR WHEN PURCHASING?

Look for a reputable brand or check that the unit conforms to BS5446 Part I (British) or UL (American) coding.

## DRAW RESULTS

Results of the Draw run by SALLY & MARTIN in conjunction with the Irish Hairdressing 2nd. L'oreal to raise money needed to buy a Baby Screening Unit for Temple Street Hospital.

It was a draw within a draw - each salon who joined the scheme would hold a draw - for their clients and the winner going forward for the Main draw. Because Sally is the chairperson of the Irish Hairdressing Federation she added prizes from her own salon as well - just to make it interesting. The winners were: First, Mrs. Morton; Second, Mrs. Hely; Third, Mrs. O'Brien; Fourth, Mrs. Meehan; Fifth, Mrs. Cullen.

### Dermot Kelly SPINOLOGIST

attends at Shopping Centre, 46  
Fortfield Park,

on Tuesday 10 a.m. - 1 p.m.  
also every Saturday afternoon from  
4 p.m. to 7 p.m.

"Qualified Gardiner will help weed  
and tidy your garden during the busy  
Winter months. Phone Anne Kelly  
504689.

Who was the singer longest at No. 1 in Ireland?  
Was there ever a week with Joint No. 1's?

FIND OUT AND A LOT MORE IN

## Larry Gogan's IRISH BOOK OF CHART HITS

An alphabetical list of all singers and their songs in the Irish Charts  
OVER 1,450 STARS AND 4,300 TITLES

At your local bookstore now

IDEAL CHRISTMAS PRESENT FOR YOUNG AND OLD

**K·C·R**  
STORES

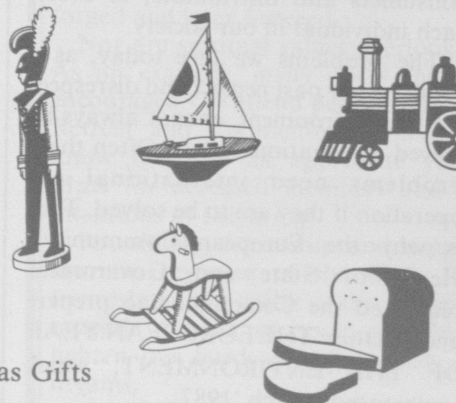
Newsagents  
Delicatessen  
Toys

**EASY PARKING**

Open 7 days a week - 8.00a.m. - 9.30p.m.

Phone: 905645

Christmas Gifts



## Did you know that this is the European Year of the Environment

The quality of our lives depends very much on the condition of our environment and how we maintain it. An irresponsible attitude towards the environment, whether manifested by littering, vandalism, or otherwise, adversely affects the quality of life of the perpetrator as well as that of all other people in the community. The litter-lout creates ugliness for everyone. The polluter of a river or stream may endanger public health, kill many species of fish, poison livestock and harm nature itself. The vandal who wrecks a telephone kiosk or damages trees degrades the environment for everyone.

If we are to maintain and improve the quality of our environment we must be aware of what is happening around us, of the threats that we face and of the very real obligation we have to current and future generations of Irish people to pass on a better environment than the one we inherited.

Daily decisions and choices made by each of us affect the environment we inhabit, and subject it to stress. Only when we come to understand and appreciate the relationship that exists between each and every one of us and our environment, will regulations to protect our environment be automatically integrated into all levels of decision making.

We are far from that today.

To be fully aware of the long term consequences of our present-day behaviour on tomorrow's environment, a better knowledge and awareness is needed at all levels of society including institutions and governments as well as scientists, teachers, youth, manufacturers and producers, farmers, consumers and distributors; in short, each individual in our society.

The problems we face today, as a result of our past neglect and disrespect for the environment, cannot always be solved on a national scale. Often these problems need international co-operation if they are to be solved. That is why the European Community's Heads of State and Government requested the Commission to prepare and organise THE EUROPEAN YEAR OF THE ENVIRONMENT, which commenced March, 1987.

The objective of EYE is to convince

each of us to play an active part in maintaining and improving our environment, locally, nationally and as members of the largest European Community. Not only in our own back garden and during the short period of one year, but to be continually and consciously aware of the international aspects of a healthy environment in a society where frontiers count for less and less.

In declaring EYE the Council of the European Community stressed how environment protection could contribute to better economic growth and help to create jobs, especially for the younger members of our society.

### Ireland's role

Ireland, located on the western margin of Europe, is seen internationally as having avoided the worst excesses of the industrial age. It has one of the lowest, if not the lowest, levels of aquatic and aerial pollution in Europe, and is an essentially unspoilt, pastoral, landscape providing opportunities for high quality tourism and recreation.

It is vital that this perception of Ireland, a country having a high quality environment, should be maintained and improved.

A quality environment is an essential ingredient for economic growth. (It helps us to maintain a healthy agricultural society). It enhances the image of our food products abroad and it helps to attract foreign investment here.

Most importantly, it is the principal ingredient in Irish tourism. In other words, many millions of pounds and many thousands of jobs depend on the maintenance of a clean and quality environment. Environmental economic growth, and indeed, any lowering of these standards is ultimately self-defeating, socially and economically.

The level of awareness and concern

about our environment in Ireland leaves much to be desired. A recent survey which sought views on the importance of the environment among Irish people. Whereas 60% of all Europeans considered environmental protection to be more important than economic growth, the reverse was the case here: only 29% of those questioned in Ireland shared this attitude. EYE will, we hope, help change these attitudes and make environmental quality a major national priority.

### Community Initiatives

In order for EYE to be a success, a great deal of action besides that being undertaken by the Government, local authorities and semi-state bodies is needed. It is essential that at the local level, community and voluntary groups become actively involved. There are tremendous needs and opportunities for awareness events, campaigns and environment projects - in urban, suburban areas and the National Committee is anxious to involve as many groups and individuals as possible. More so now, because of "cut backs" the Government projects may not get the full Government support that is necessary.

### And your role?

Whether you are a business person, an industrialist, a member of the professions, a parent or young person, you can play your part in EYE by participating in local or national events, by organising your own activity or project, and by encouraging others to do likewise.

Any contribution, no matter how small, will be worthwhile.

**YOUR INVOLVEMENT IS VITAL.** Without it the levels of awareness and concern will not increase, and a Quality Environment for all of us will not become a major national priority. **IT IS UP TO YOU.**

## ROY HAND

WHO CREATED THE  
SUPERB EVERCLEAR TV  
SERVICE, NOW AT  
CRUMLIN CROSS  
Opposite Submarine Bar

**Roy Hand T.V. Ltd.**  
**562899/562800**  
**562900**

## TV VIDEO REPAIR SPECIALISTS

- Rental Purchase
- Straight Renting
- Best Cash Discounts
- Special TV/Video
- Package

LATE NIGHT OPENING  
Thur.-Fri. till 9p.m.



# Local author has book published

## Culann and the Leprechauns

Two local men, Paul Murray and Karl Cannon, have cooperated to produce a book based on the Cuchulainn legend. The book, which is called 'Culann and the Leprechauns', is suitable for children up to twelve years and could be read for those from aged six to nine.

Karl Cannon, a doctor who lives at Fortfield Park, has done about twenty illustrations and already has a book to his credit, on his native area of Lettermacaward in Co. Donegal. The story is written by Paul Murray, who lives in Templeville Drive and is High Court reporter with the Irish Times.

The book, which is published by Mercier Press, retails at £4.95 and traces the adventures of Culann, son of Cuchulainn. While every child knows about Cuchulainn, this is the first time that the tale of Culann's exploits has been told to children.

In Culann's many adventures leading to manhood, Culann is befriended by the leprechauns Sobola, Fergus and Peadar, by Áinemhara the mermaid and in France where he goes to school by the 'Little People', *les petits gens*.

He endures capture by Scottish pirates and the nastiness of Maistreach, the evil schoolmaster and at one stage is bewitched into marriage by Menessa, daughter of the Goddess of Manhaters.

The book's readers will hear about Rinne, the Chief Good Fairy; Fat Seamus, Leader of all the Leprechauns; Pono, chief of the Scottish sprites, as well as Murgan, the three-legged giant. There are battles at sea, on land, in the vale of Snakes and with Angus, the bully, as Culann, with the help of his sometimes unseen friends, weaves his way between this and the Other World, and the gap between the two, as Culann



increasingly realises, is not all that clear.

There's a happy, even romantic, ending, but not before Culann meets his unknown half-brother Conlaoch, and the love of his life is kidnapped by Maeve, Queen of Connacht.

Primroses are plucked, foxes are charmed, cauldrons are stirred, old hags cackle, and the Triangular Warriors appear in Culann's dream as he is nursed by the animals at the Salmon River. It all happened over 2,000 years ago but many children will see themselves and all their joys and troubles in Ireland's unsung hero, Culann.

## J.K.C. Insurances

Life and Pension  
Consultants  
Unit-Linked Funds  
Guaranteed income and  
growth bonds.

TEMPLEOGUE  
VILLAGE,  
DUBLIN 6

Tel: 901700-904454

## SOLOS AND FRIENDS

Solos and Friends, the Club for the Young at Heart, meets regularly on: The Third Monday of each Month. Venue: St. Mary's Hall (near Pius X Church). Time: 8 o'clock.

Our Club is aptly named. It covers a wide spectrum from 17 to 70 (give or take a year!), single, widowed, married, male and female. Founded several years ago, it has to its credit a long list of activities and functions enjoyed by all. One thinks of visits to the theatre, demonstrations, holidays, excursions, walks, auctions, question times, bingo, lectures - not to mention John McCormack and Éamonn MacThomáis! Need I go on? There was a memorable participation in the prestigious TV programme, LIVE AT THREE. If you missed the show, folks, we have the video. The crack was ninety!

However, as in most groups, numbers do fluctuate for a whole variety of reasons and so Solos and Friends has decided to increase its membership as from now. We warmly invite newcomers to our ranks. Remember: the Third Monday, St. Mary's Hall.

MEN would be welcomed with open arms - speaking METAPHORICALLY, of course! We would appreciate their solid presence, sound advice and distinctive points of view. Yet, have no fears - you shy males out there. We in Solos and Friends wisely concede that good, platonic friendships are among life's great enrichments!

There is a wealth of ideas and enthusiasm in the Club and new members can add to that store. Together we can do a lot to improve the quality of life. In addition to established programmes, one envisages discussions, inter-Club exchange, etc. You name it. So, we look forward to meeting you. Please come.

We record with joy the fact that many existing members joined whilst still mourning loved ones. They say now that Solos and Friends marked a turning point in their lives. At those crucial times new friendships were forged and later fostered.

Nor are spiritual values overlooked. As an example, many opt - and are encouraged - to attend periodically at a Retreat and Counselling Centre. We know too that all appreciate yearly Mass for deceased members and the intentions of the living.

Put simply, friendship and support are the keystones of the Club. The friendship is visible, the support tangible. So, let us pool our talents, lighten our burdens and nourish our dreams.

A. Member

## PLANNING APPLICATIONS

Reg/Ref 87A/757,  
Spawell Hospitality and Leisure Centre,  
Wellington Lane,  
30 Houses.

Reg/Ref 87A/714,  
A & M O'Donnell,  
Rear of 8 Riverside Cottages,  
Bungalow A1.

# CHALLENGE

There are two schools of thought in Templeogue today - I have been "got at" from time to time by both sides in this controversy. O.K. lets hear from the two sides in the next issue.

Should we welcome the five families of Travelling People into the area? or Should we fight the Council on allowing five families of Travelling People into the area?

The two most explicit Arguments will be published in the next issue of Templeogue Telegraph -

Please have them in by November 30th. to Templeogue Telegraph, 49, Wainsfort Park, Terenure, Dublin 6.

## Féile Bhride, Templeogue'88

The organising Committee are busy with arrangements for the Féile week-end 5th to 7th. February next. Competitions will be held in Our Lady's School, Templeogue Road, by kind permission. Syllabus and entry forms will be available from local schools and private tutors. Secretary, Mrs. Maeve Cavanagh, 10 Templeville Park, phone 905301 or Féile President, May O'Neill, phone 903000.

Last Date  
for copy  
Christmas Issue  
of Templeogue  
Telegraph  
November 30th

## A VIEW

By A. O'Donoghue.

Drawn each eve  
to the top of a field  
to take my fill  
at the top of the hill  
of the view beyond

I stand at the wall  
absorbing it all  
for days in the fall  
when no longer there  
to take my fill  
at the top of the hill  
of the view beyond

The view is such  
I soon lose touch  
and fail to answer any call  
as I take my fill  
at the top of the hill  
of the view beyond

When I close to recall  
anytime at all  
this view o'er the wall  
I sit very still and take my fill  
at the top of the hill  
of the view beyond.

8, Wainsfort Drive,  
Terenure, Dublin 6.



## BIKES

AT PRICES YOU CAN  
AFFORD

We stock a large range of cycles - all  
shapes and sizes from tiny tots ...  
...to adults.

- THE BEST AFTER SALES SERVICE
- THE BEST BARGAINS
- BUY FROM THE EXPERTS

TEMPLEOGUE VILLAGE  
PHONE 905094

# HOLLINSWORTH



# Calor Prizewinners for Art



The 'Cooley Ladies' of Templeogue L.C. with their President Mildred Sargent who catered for and fed the multitude of parishioners who flocked to the anniversary party for Fr. Breen, held in St. Mary's Rugby Club.



Mildred Sargent, popular president of the Templeogue Ladies Club with Fr. Breen.

## Fr. Breen's Special Day



Congratulations all round! From left to right - Prof. Campbell Bruce (adjudicator), Professor of Fine Arts, N.C.A.D.; Benvon Ward, Templeogue Ladies Club; Mr. Kennedy, Calor Kosangas; and Imelda Gogan, President, Irish Federatin of Womens Clubs.



"Winners All!" in the recent I.F.W.C. Art Competition sponsored by Calor Kosangas. Left to right - Imelda Purcell, Bunny Williams, Benvon Ward, Betty Palmer, all from Templeogue Ladies Club.

## Our adopted Missions in Peru and Brazil

The mission started by the late Sister Joyce Robarts, R.C.E. about three years ago are already coming to fruition - the Sisters of Our Lady's School, Templeogue Road are rejoicing at the news just received from the Prelature in Sicuani, Peru, that the St. Michael Centre for special education and the Joyce Robarts Rehabilitation Room will be officially opened in April next. Friends of the Mission join with the Sisters in their joy at this wonderful achievement over such a short period of sheer hard work by dear Sister Robarts who died a year ago last June, R.I.P. Fund-raising efforts will be maintained not only in memory of her wonderful self, but because of the help to the very young and the deprived these projects bring.

We are happy, too, that Father Pat

Keegan, C.S.Sp. of the Brazil Mission is home on a short holiday and news of his work will be reported later.

Friends of Father Pat Keegan, C.S.Sp. who left Templeogue College as Careers Master for the Mission fields near Rio de Janeiro, were delighted to see him home on holiday during September/October. He spent some time with us within the Parish of St. Pius X telling of the conditions he and his colleagues endure - their house permanently saturated with smoke from rubbish dumps nearby - as they tend to their flock. He thanks all at home here for the wonderful help they receive which enables them to make their accommodation habitable enough to cope with their immediate needs. He celebrated a special Mass in the College for all of us - afterwards there was a pleasant get-together with a

cup of tea, and most important, a few words with himself. May he and his colleagues continue to have the health and strength they need for their labours and may we continue to support them through our interest in their welfare. It was fitting that he spoke to us at all Masses in the Church of St. Pius X on Mission Sunday. Rath De ar an obair.

May O'Neill

### CALENDER/DIARY

November 21st. Cake sale in aid of Sr. J. Robart's Mission, Peru.

November 22nd. Cake sale in aid of Sr. J. Robart's Mission, Peru in St. Mary's Room, St. Pius X Church after all Masses.

November 30th. Irish Wildbird Conservancy Inaugural meeting, Community College, Firhouse.

# your questions about Credit Union answered

## What is a Credit Union?

A Credit Union is a non-profit Financial Co-op., owned and operated by its members, within a Common Bond.

## To whom is Membership open?

To persons who live within the Common Bond area, who agree to abide by the rules. A Credit Union Common Bond is the area and the people it is registered to serve.

## What are the objects of Credit Unions?

- To encourage members to save.
- To promote thrift in the community.
- To provide a Low Cost Loans for Members.
- To have a structure whereby members may help each other.
- To guide members towards the wise use of money in the management of their financial affairs.

## How may I become a Member?

- Fill in a Membership Application form.
- When accepted pay a small entrance fee.
- Purchase your first £1.00 share (or more if you so wish).
- Make up your mind to become a regular Saver.

## Who runs the Credit Union?

The Credit Union is managed by a Board of Directors who are elected by members at the Annual General Meeting. A Supervisory Committee is also elected who see that the Board of Directors and other Committees are operating according to the Credit Union rule book and the Act relating to Credit Unions.

## Are members expected to Save?

*Yes! Without Savings the Credit Union could not function.*

## How much should a member Save?

No amount is fixed as each member has different circumstances; but regular savings accumulate. Thus a savings pattern is formed.  
*(A survey has shown that weekly Savers make greater impact on total Savings).*

## Share/Savings - What should I aim for?

- The first target should be £100.00
- The second target - 5 weeks income.
- The third target - 10 weeks income.
- The fourth target - 15 weeks income.

The above will be reached over a period of time depending on the amount available for saving. You will note that the last three specify income. This will suit members who have a range of incomes and so different targets.

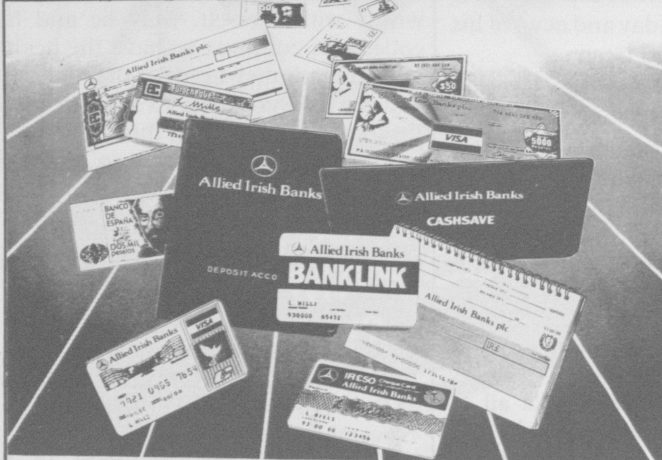
## Is it wise to withdraw shares?


*This should be the last decision as shares are your security for the future. They take time to accumulate and are the basic strength of a Credit Union. Shares built up over a period make a member self sufficient and help other members at the same time.*

*Don't forget, members help each other through Credit Union Co-operation. For further advice see your Credit Union.*

More next issue

## All you ever wanted in a Bank.



 **Allied Irish Bank**

## Press Release Yew Troupe present 'Abigail's Party'

YEW TROUPE, the local drama group in Terenure, is presenting Mike Leigh's famous play, *Abigail's Party* on December 3rd, 4th, 5th and 6th in Terenure Parish Hall at 8p.m. nightly. This highly entertaining production is directed by Sean Leahy who is well known in amateur drama circles.

Yew Troupe has been in existence since 1979 with a number of successful productions to date. Under Séan Leahy's direction, *Abigail's Party* is reckoned to be the Troupe's most demanding play to date, such is his drive for perfection.

## PHOTOCOPYING FAX SERVICE

49, Wainsfort Park.

Phone 904168

## McMAHON'S

DRY CLEANERS  
AND LAUNDRETTE

Specialists in the cleaning of Silk, Fur, Whites, Leather and Suede Garments.

Launderette - Invisible Mending - Alterations

Open Monday-Friday 8-6.15, Saturday 9-6.

Templeogue Village. Telephone: 904098.

Knocklyon Shopping Centre. Telephone: 942266.



# THE TEMPLEOGUE POLITICAL SCENE

## AIR POLLUTION ACT 1987

I feel that the residents of Templeogue would be very interested in the detail of the Air Pollution Act and the implementation of same.

*Cllr. Stanley Laing*

The Air Pollution Act, 1987 provides a comprehensive statutory framework for control of air quality. Limited provisions existed under previous legislation relating to air pollution control. These provisions are due for appeal under the new Act, although it is not intended to repeal all of them immediately.

The Act is divided into six parts as follows:-

**Part I (Sections 1-22) - General Matters of Definition, Administration & Enforcement Procedures.**

**Part II (Sections 23-29) - General Provision Relating to Air Pollution** including a prohibition on the occupier of any premises, including a private dwelling, to cause or permit an emission from the premises in such quantity, or in such a manner, as to be a nuisance to any person. This represents a wider power than the nuisance provisions of the control of the Air Pollution Regulations 1970.

This part of the Act also empowers local authorities to serve a notice requiring the occupier of any premises to take such measures as necessary to prevent or to limit air pollution. It also empowers local authorities to take action themselves in urgent cases where necessary to prevent or to limit air pollution and to recover the cost of such measures as a simple contract debt. It also imposes an obligation on the occupiers of all premises, except private dwellings to use the best practicable means to limit and, if possible, to prevent emissions from the premises.

The Minister is also empowered in the Act (Sections 24-25) to make regulations to prohibit specified emissions or the production, import or use of a substance (other than a fuel) which could cause air pollution. However these sections are not yet in force.

**Part III (Sections 30-38) - Licencing of Industrial Plant.**

The coming into operation of this part of the Act has been deferred to allow procedural regulations and advice on emissions standards to be completed by

the Department.

**Part IV (Sections 39-49) - Special Control Areas.**

Clean air zoning in heavily urbanised areas is a feature of air pollution strategies of many countries.

Part IV of the Act is designed to allow special controls on the emissions of pollutants in certain areas. This provides the framework for an intensive air pollution control system to be established over a limited area to deal with special problems, particularly when these are found to arise from a large number of individual premises including domestic.

In the event of a Special Control Area Order being necessary there is provision in the Act for the making of a scheme of financial assistance in relation to the costs incurred by occupiers of premises in complying with such an Order.



*Stanley Laing*

In a recent circular the Minister has indicated that he will consider the need for such a scheme in the light of developments and taking account of the budgetary situation.

The making of a Special Control Area Order is a function reserved to the elected members.

**Part V (Sections 46-53) - Air Quality Management Plan & Standards.**

A local authority is empowered to make an "Air Quality Management Plan" in respect of its area or part of its area. The Minister is also empowered to direct the local authority to make such a Plan. There is also provision for the establishment of air quality standards emissions limit values and regulations in relation to fuel (Sections 50-53) but these provisions have not yet been brought into operation.

**Part VI (Sections 54-59) - Miscellaneous.**

This part of the Act provides a formal

statutory framework for monitoring of air pollution by local authorities and includes the power for local authorities to require monitoring of emissions by the occupiers of non domestic premises. There is also a provision whereby the occupier of a premises, who may not have the authority to carry out works to meet the requirements of the local authority in relation to the Act, to apply to the District Court for such authority.

**Conclusion:-**

The implications of the Act in relation to County Dublin requires further study by the appropriate officers of the Council in conjunction with the Chief Medical Officer and his staff and a further report will be submitted in due course.

Having regard, however, to the results from the monitoring stations, maintained by the Council over the last 10 years, it is not anticipated that there will be any need for significant changes in Council policy in the short-term. Specific, complaints brought to the Councils notice will of course be examined for any necessary action under the Act.

G.W. Redmond.

Assistant City & County Manager.

Well folks,

I am sure you will all agree our local area is looking very well and it was wonderful to hear we had been awarded a prize in the Dublin County Council Tidy Districts Competition. Our neighbours, Glendown have been awarded the overall winners, an award I am sure we would all join in congratulating them in their magnificent effort.

The County Council have been busy in carrying out a number of environmental works, particularly in our local shopping centres, Fortfield Park Shops flower bed is looking good and the laneway at the side has been resurfaced. Wainsfort Drive shops have been given a new look with the addition of two raised flower areas, the parking has been improved and I am hoping to have the white pegs replaced with concrete bollards and the laneway connecting Wainsfort Park up the road cleaned up and resurfaced, as this is badly needed. Cypress Park shops parking area has been re-surfaced and I hope that further improvements will be carried out. Templeogue Village has got new life and a very lively Traders Association is determined to keep it going and I understand they have great

plans for Christmas, so look out!!

At present the Council are busy repairing the badly damaged footpath adjacent to the shops on the north side, close to the new houses which I have requested for sometime. Also I have received many favourable comments about our improved roundabout which is the focal point of our community. However all this work needs your support. As you are aware the Council has been cut drastically from Central Government funds and I am appealing to you all to play your part in cutting grasses, protecting the trees, many of which have been vandalised recently, and to use the litter bins adjacent to the shopping areas.

The latest on the Itinerant Settlement Programme is that a joint residents associations grouping met with the Council officials recently and a resolution was passed that this community opposed the present proposed site or indeed any site within the Kimmage Manor grounds and this resolution has been sent to the County Manager and the Provinciate of the Order. So we are now waiting for a final decision on this important issue and I have also asked the Council that in view of local opposition that Kimmage Manor should be deleted from the settlement programme. The Council have also received a letter from the Minister for the Environment, Deputy P. Flynn, to speed up the programme and to send him updated reports every three months. My opinion is that a more acceptable site would be found elsewhere and that the Council should proceed with the ten family site with on site supervision at Tymon Lane which was approved some three or four years ago.

Following further local representations I have asked the Council to carry out further checks at the Forfield/Templeville junction and my report is attached.

Councillor Stanley Laing,

86 Templeville Road, Phone 905571.  
Local Centre, every Saturday 10 o'clock  
(accept holidays)

Templeogue Village opposite Troys.

John Chambers Acc. Office.

P.S. Also many residents have requested an examination of the traffic light system on the Templeogue Road/Templeville Road junction and I am awaiting the result.

#### Templeville Road/Fortfield Park Junction - Traffic Control.

Dear Councillor,

I refer to your further representation

for replacement of the existing pedestrian pelican signal at the above junction with full signals. The Council's Traffic Study Group have previously examined this request at their February 1987 meeting and did not recommend full signal control of the junction as warrant conditions for full signals were not reached. However, in view of your request for a re-examination of the matter I will arrange for limited traffic counts to be carried out to ascertain if the situation has changed and a further submission will be made to a future meeting of the Traffic Study Group.

Yours sincerely,

T. McGrath,

Senior Engineer,  
Road, Traffic.

P.S. I will continue to look for an improvement at this important junction but owing to the financial difficulties nothing can be done until next year.

#### Wainsfort Drive - Bollards.

*Question - Councillor S. Laing.*

"To ask the Manager when will the white pegs be replaced with red tinted concrete bollards adjacent to the corner and on both sides of the entrance to Wainsfort Drive".

*Reply*

Arrangements will be made to replace the white pegs with red tinted bollards as soon as the work can be accommodated in the programme of works for the area.

#### Wainsfort Park and Road - Laneway.

*Question: Councillor S. Laing.*

"To ask the Manager to carry out the surfacing on the laneway connecting Wainsfort Park and Wainsfort Road as this item was agreed a long time ago?"

*Reply*

The pathing of the concrete surface and the cleaning of this laneway will be included in the Engineers programme of works for the area.

#### Terenure Electoral Area - Reinstatement Work - Gas Company.

*Question: Councillor S. Laing.*

"To ask the Manager to give a detailed report on the reinstatement of footpaths in the Terenure Electoral Area due to Gas works?"

*Reply*

The following report is before the Committee at this meeting under Item No. 51(a):-

"Orders covering 927 locations are on the Council's books for the Terenure Electoral area. The following table sets out the number of cuttings carried out by the various bodies in this area:-

Bord Telecom	503
Gas Company	398
E.S.B.	8
Dublin Corporation	15
Commercial & Private	1
Dublin County Council	2
.....	.....
Total	927

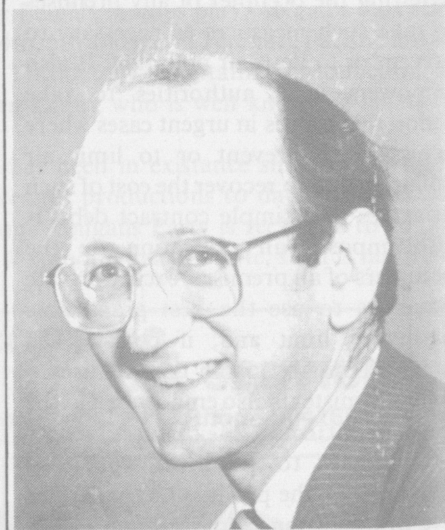
There are currently five separate gangs fully employed in the Belgard area solely on reinstatement works, and progress on this work is satisfactory.

I am sure many of our residents will be pleased to know work is continually being carried, indeed much of the work we would normally be carrying on is not now being done owing to "cut backs" and so consequently there is a concentration in reinstatement works.

Councillor Stanley Laing.

## E.Y.E. PROJECT:

Congratulations to the Templeogue Ladies Club on the success of having their European Year of the Environment project accepted for funding by the Government. The Ladies Club is showing the lead in protecting and improving our environment. The support of the whole community is needed to ensure the success of the project. In these times of "financial rectitude" it is only by our own efforts can we expect to have a pleasing and beautiful environment to live in and enjoy.



#### Glendown - Tidy Districts:

Glendown Residents have shown again their energy and commitment in achieving overall first place in the tidy districts competition. Congratulations Glendown.

#### Service Charges:

The County Council will soon be examining the estimates for revenue and expenditure for 1988. Because of the



## **E.Y.E. PROJECT**

much publicised cuts in funding for local authorities the question of service charges will again raise its head. Services will undoubtedly have to be examined and some diminution in services is inevitable. The extent of the cut back in services could be offset somewhat by the imposition of service charges for water, refuse collection, etc. I would be very interested to hear from readers whether you feel some service charge is justified or whether you would be prepared to accept some cut back in services and if so what services would you propose be cut back and in what areas do you believe efficiencies can be made. The process for determining the local authority budget is probably the area where county councillors can have most impact on the Council's actions for the whole year. It would help me greatly if you the constituents could give me your views on the matter so that I may put them to the Council for consideration. My phone number is 558863 and I would be pleased to hear from you.

### **Clanbrassil Street Road Widening:**

The Dublin City Development Plan will be going on public display shortly. The part of the plan which will affect us most is that part which is at the moment the most controversial - the Patrick Street, Clanbrassil Street road widening plan. It is my view that the freer flow of traffic which would occur by the widening of Clanbrassil Street would make the city far more accessible for the residents of Templeogue. Millions of pounds have been spent on the acquisition of properties along the route of the road and any going back on the decision would result in a continuing state of dereliction of the whole area along the route. If you support the plan, which is the work of professional planners over many years, do write to the Corporation telling them of your support. It is important that those who oppose the plan are not the only ones whose views are taken into account.

SEAN ARDAGH M.C.C.

Fianna Fail

## **College and Wainsfort Residents' Association**

Dear Editor,

I wish to inform you of the reactivation of the above Association. At a meeting on Tuesday, 20th. October 1987, a total of 122 residents attended and a committee was elected. The first committee meeting was held on Friday, 23rd. October and the officers elected were - Chairman: Paddy Devenny, Vice Chairman: Eddie Power, Secretary: Mrs. Renee McGinn, Assistant Secretary: Mrs. Geraldine Kennedy, Treasurer: Jack Mullen.

Copies of the constitution may be had on application from the secretary of the Association.

If individual residents have specific problems could they contact the Secretary regarding same.

Yours faithfully, Renee McGinn, Secretary.

## **MOISELLE ESTATES**

*Auctioneers  
Estate Agents  
Valuers  
Letting Agents*

**Frederick G. Moisselle  
Liam McArdle  
M.I.A.V.I.**

**108 Greenlea Rd.,  
Terenure,  
Dublin 6.  
Phone 01-901434**

## **WHO ARE YOU?**

Who are you? My faceless foe.

An answer I would like to know.

You hound me for no good reason.

Yes! it happens every season.

People! I am very sorry,

If by living I cause you worry.

Like you I have a car or two,

A blade of grass and a window view.

I have no time to stand and stare,

But if you need me I am there.

My Pen I use for good or better,

But never for a poison letter.

Thirty years upon the scene,

Friends of many I have been.

Behind the smiles of those I know,

Who are you my faceless foe?

God will judge you theres no doubt!

He'll not need me, to point you out.

On his scroll your deeds will mount,

You'll be there to take account.

Truth and kindness is what I know,

So stand up. My faceless foe.

Doreen Ormonde Jolley.

## **New E.E.A. Leaflets Published**

The Employment Equality Agency has recently published new information leaflets, covering two aspects of our work.

The first leaflet is entitled: 'How the Employment Equality Agency can help You and it sets out clearly the procedures involved in taking an equality case to the Labour Court detailing, in particular, the support and advice that is available from the E.E.A.

The leaflet is designed to be of assistance to all persons in employment and to provide a guide to what exactly is involved in asserting your rights under the law.

The second leaflet - 'Positive Approaches' describes the role of positive action programmes in eliminating sex discrimination in employment and thereby increasing the efficiency of resource use in Irish industry. The leaflet outlines the elements that might be included in such a programme and how it might be implemented.

Both leaflets are available free of charge from the E.E.A.

## **CHIROPODY**

**SIGHLE HANNON** R.G.N., R.M., M.C.S.Ch., M.I.Ch.O., M.A.Ch.I.

*Registered Chiropodist*

**Surgery: 11 Knocklyon Heights, Dublin 16.**

*Home visits on request.*

**For Appointments: TELEPHONE 942045**

# TECHNIQUE

h·a·i·r and  
t·a·n·n·i·n·g



PRESENT:

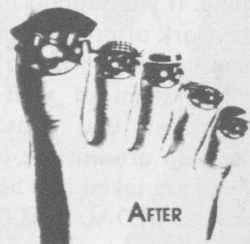
# SUNTANNING

Come out of the cold and  
get a stunning tan for Christmas  
in our Super Warm Private  
Sun Room equipped with the  
latest turbo sunbed from  
**SCANDANAVIA**  
and full shower facilities.



10 FULL HALF HOUR SESSIONS

**£25.00**



Phone us on **900452** (24 hours) or  
call to Wainsfort Drive, (opposite Kavanaghs Pub).

P.S. BRING THIS AD AND GET AN EXTRA SESSION **FREE**  
REMEMBER, WE ARE OPEN TO 9P.M. MONDAY TO FRIDAY  
*OFFER VALID TO CHRISTMAS*