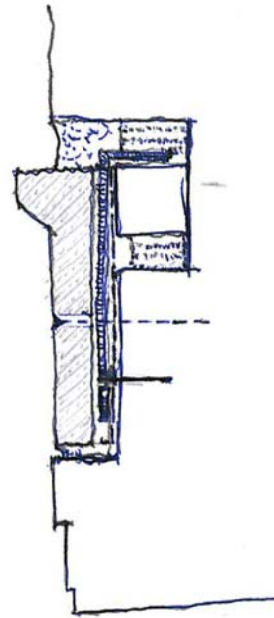


S.S. SHIMS UNDER &
OVER W.I. BAR

S.S. L-SECTIONS
HOOKED OVER W.I.
& PINNED TO GRANITE

NEW LEINSTER
GRANITE BEDDED IN
PREPARED SLOT &
PINNED TO EXISTING
RUBBLE CORE



DETAIL A 1:5

No.	DATE	REVISION

SCALE:- 1:5
DATE:- SEP 2010
DRAWN:- FÓS

PROJECT TITLE: ESSENTIAL REPAIRS & CONSERVATION OF THE ROMAN ARCH, RATHFARNHAM	
DRAWING TITLE: POST SUBSTANTIAL COMPLETION:- NORTH-EASTERN CORNICE: AS REPAIRED - DETAIL A	
SENIOR ARCHITECT: PATRICK DE ROE	PROJECT ARCHITECT: FEARGAL Ó SÚILLEABHÁIN

DRAWING NO: 55	REV.